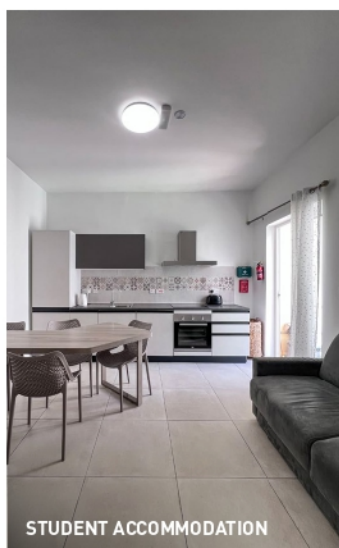


# Course & Accommodation Fees 2025



# Course Fees

## INCLUDED IN THE COURSE RESOURCE FEE

- Oxford Online Practice (valid for 18 months)
- Orientation Walk
- Welcome Meeting
- Placement Test
- One Course Book
- Clubclass End of Course Certificate
- Oxford Quality Centre Certificate
- Free Wi-Fi
- Student Bag
- Student Discount Card
- Local SIM (on request)
- Weekly tutorials (8 weeks +)
- Academic Counselling
- Student Library
- 24/7 Assistance
- Use of Outdoor Pool
- Use of Fitness Centre & Sauna
- Games Lounge

## NOTES

- Courses start every Monday.
- Each lesson consists of 45 minutes.
- An intermediate level of English or higher is required to join the Professional English courses. Students wishing to join an Exam Preparation course must have an appropriate level of English relevant to the exam they wish to take.

Our Centre is certified to cater for an array of special programmes including Bildungsurlaub, Erasmus + and CLIL.

### LOW SEASON

01.01.2025 – 14.06.2025  
24.08.2025 – 31.12.2025

### HIGH SEASON

15.06.2025 – 23.08.2025

**COURSE HIGH SEASON  
SUPPLEMENT  
€80 PER WEEK**

**NO HIGH SEASON SUPPLEMENT  
ON COURSE FEES FOR STAYS  
OF 8 WEEKS AND OVER**

COURSE TYPE	STUDENTS PER CLASS	LESSONS PER WEEK	1 - 7 WEEKS PRICE €	8 - 23 WEEKS PRICE €	24+ WEEKS PRICE €
<b>Course Resource Fee (Compulsory &amp; non-refundable)</b>			<b>50</b>	<b>80</b>	<b>110</b>
General English – Standard	12	20	200	160	140
General English Standard + English For Work	12	30	265	225	205
General English – Super Intensive	12	40	330	290	270
Business English – Standard	8	20	280	240	220
Business English – Intensive	8/12	30	345	305	285
Business English – Combination	8/1	30	460	420	400
Individual English – 5 (also available online)	1	5	180	180	180
Individual English – 10 (also available online)	1	10	360	360	360
Individual English – 20 (also available online)	1	20	720	720	720
Semi-Individual – 5*	2	5	90	90	90
Semi-Individual – 10*	2	10	180	180	180
Semi-Individual – 20*	2	20	360	360	360
Exam Preparation – Classic**	12/1	30	560	520	500
Exam Preparation – Fluency**	12/1	30	785	785	785
Exam Preparation – 30**	1	30	1080	1080	1080
<b>High Season supplement</b>			<b>80</b>	<b>n/a</b>	<b>n/a</b>

\* Two students of the same level and travelling together can book this course.

\*\* Examination Fee/Administration Fee of €25 applies when booking Exam Preparation Courses

## OXFORD QUALITY PROGRAMME

The Oxford Quality Programme is an agreement between Oxford University Press and selected schools worldwide, that share a commitment to excellence in the teaching of English.

Clubclass English Language School has always demonstrated its commitment to academic excellence by using quality English language teaching materials. As the only member of the Oxford University Quality Programme in Malta, Clubclass benefits from a range of quality educational services offered to the school. Clubclass benefits from quality English language materials with proven success around the world, including both print-based course books and digital learning tools.

Clubclass is working together with Oxford University Press to implement a range of initiatives designed to enhance our English language educational offer. As an Oxford Quality institution, we benefit from the use of high-quality educational solutions, as well as an exclusive level of consultancy and support from our local Oxford University Press team.

**Access to this programme is 18 months from the date of activation.**

OXFORD  
QUALITY

Proudly working in collaboration with  
Oxford University Press  
A department of the University of Oxford

All our students get access to the Oxford Online Skills Programme, which is an excellent tool to practice and improve upon their listening, speaking, reading and writing skills.



## ACADEMIC AND INTENSIVE COURSES

CORE MODULES CAN BE COMBINED TO CREATE THE FOLLOWING SAMPLE COURSES. THE BELOW ARE THE MOST POPULAR COMBINATIONS; OTHER OPTIONS COMBINING TWO OR MORE OF THE CORE MODULES ARE ALSO POSSIBLE.

### Exam Preparation

		NUMBER OF LESSONS PER WEEK	HOURS
Classic	Individual English 10 + General English - Standard	30	22.5
Fluency	Individual English 20 + Exam Preparation 10	30	22.5
30	Individual English 30	30	22.5

### Combination Course

		NUMBER OF LESSONS PER WEEK	HOURS
Standard	General English - Standard + Individual English 10	30	22.5
Intensive	Individual English 20 + English For Work	30	22.5

### Business English

		NUMBER OF LESSONS PER WEEK	HOURS
Intensive	*Business English - Mini Group + English For Work	30	22.5
Combination	Business English - Mini Group + Individual English 10	30	22.5

\* Business English follows a structured approach based on the course book, while English For Work emphasises speaking and practical, real-world applications.



### ONLINE LESSONS

Clubclass English Language School is offering English lessons online that will help you learn English in the comfort of your own home. Through our online platform you will have the opportunity to improve your English language skills and virtually interact with students throughout the world.



### OTHER FEES / INFORMATION

#### Airport Transfers

**On Arrival** - FREE (when booking accommodation)

**On Departure** - €28.50

#### Pocket Money Fee €10

#### Courier Fee for Original Documents

**Europe** €65

**Asia incl. CIS** €75

**South America** €85 (subject to change dependant on courier company)

#### Specific Lessons time supplement

€45 per week

- Rates and supplements are in € per person per week and for participants aged 16 years and over.
- Rates do not include exam fees, leisure or cultural activities; these can be booked and paid for at Clubclass.
- Rates do not include insurance.
- Prices may change if there are revisions in governmental policy, fuel or tax increases, or other unforeseen events beyond the school's control.
- All fees are correct at the time of going to print. Clubclass retains the right to amend the fees as necessary.
- Bookings which extend over more than one season will be charged the respective weekly supplement for the season concerned unless otherwise stated.
- In cases of necessity the school reserves the right to exceed the maximum number of students in class.

# Accommodation Fees

CLICK HERE  
TO VIEW OUR  
ACCOMMODATION  
FACTSHEETS



## ACCOMMODATION TYPE

1 - 7 WEEKS  
PRICE €

8 - 23 WEEKS  
PRICE €

24+ WEEKS  
PRICE €

### SHARING (three or four\* persons in a bedroom)

Student House (SC)*	155	150	145
Sidra Apartments (SC)*	160	155	150
Hostel (SC)	165	160	155
Garden View - Two Bedroom Apartment (SC)	175	170	165
Amber Court (SC)	180	175	170
Garden View - One Bedroom Apartment (SC)	185	180	175
Host Family (HB)	220	210	200
<b>High Season Supplement</b>	<b>80</b>	<b>80</b>	<b>n/a</b>

### TWIN (two persons in a bedroom)

Student House (SC)	180	160	150
Sidra Apartments (SC)	190	170	155
Hostel (SC)	200	175	155
Garden View - Two Bedroom Apartment (SC)	220	200	180
Amber Court (SC)	225	205	185
St. Andrews Suites - Two Bedroom Suite (SC)	230	210	190
Sunshine Court - Two Bedroom Suite (SC)	230	210	190
Garden View - One Bedroom Apartment (SC)	240	220	200
St. Andrews Suites - One Bedroom Suite (SC)	250	230	210
Sunshine Court - One Bedroom Suite (SC)	250	230	210
Host Family (HB)	240	230	220
<b>High Season Supplement</b>	<b>80</b>	<b>80</b>	<b>n/a</b>

### SINGLE (one person in a bedroom)

Sidra Apartments (SC)	240	220	200
Garden View - Two Bedroom Apartment (SC)	300	285	260
Amber Court (SC)	310	290	270
St. Andrews Suites - Two Bedroom Suite (SC)	320	300	280
Sunshine Court - Two Bedroom Suite (SC)	320	300	280
Garden View - One Bedroom Apartment (SC)	340	320	300
St. Andrews Suites - One Bedroom Suite (SC)	360	340	320
Sunshine Court - One Bedroom Suite (SC)	360	340	320
Host Family (HB)	310	300	290
<b>High Season Supplement</b>	<b>80</b>	<b>80</b>	<b>n/a</b>

SC – Self Catering HB – Half Board

## LOW SEASON

01.01.2025 – 14.06.2025

24.08.2025 – 31.12.2025

## HIGH SEASON

15.06.2025 – 23.08.2025

ACCOMMODATION  
HIGH SEASON  
SUPPLEMENT  
**€80 PER WEEK**

NO HIGH SEASON SUPPLEMENT  
ON ACCOMMODATION FEES FOR  
STAYS OF 24 WEEKS AND OVER.  
(NOT APPLICABLE FOR HOST  
FAMILY STAYS)

## CATERING OPTIONS

at Three Black Sheep  
Restaurant in complex

### Continental Breakfast

€66 per week  
(for 7 breakfasts)

### Packed Lunch

€66 per week  
(for 7 lunches)

### Dinner Three Course

€127 per week  
(for 7 dinners – meal  
includes beverage)

### Special Diet Supplement (will also apply to Host Family bookings)

€15 Breakfast per week  
€10 Packed Lunch per week  
€15 Dinner per week

## ACCOMMODATION INFORMATION

- All accommodation options are subject to availability.
- Check-in on the day of arrival is at 14:00.  
An earlier check-in is possible at an additional fee of one night.
- Check-out on the day of departure is at 11:00.  
A later check-out is possible at an additional fee of one night.
- Private Bathroom supplement in a host family €60 per week.
- Laundrette available on campus: €6 wash / €4 dry.
- Travel Insurance €20 per week (minimum two weeks).
- Airport Transfer on arrival – FREE when booking accommodation (minimum one week).**
- Only nationality in the room (subject to availability) €60
- All prices are inclusive of the applicable VAT rates in Malta. ECO TAX is applicable to all students aged 18 and over – €0.50 per night, capped at a maximum of €5 per visit.
- A refundable damage deposit of €100 will be collected from each student on arrival – this does not apply to students staying with host families.
- A safety deposit box can be rented at the School Reception upon request at €10 (refundable).
- Guest Fee - when booking single room a guest may invite a friend or a family member. The guest fee will be equivalent to the difference between single and twice the twin rate.