

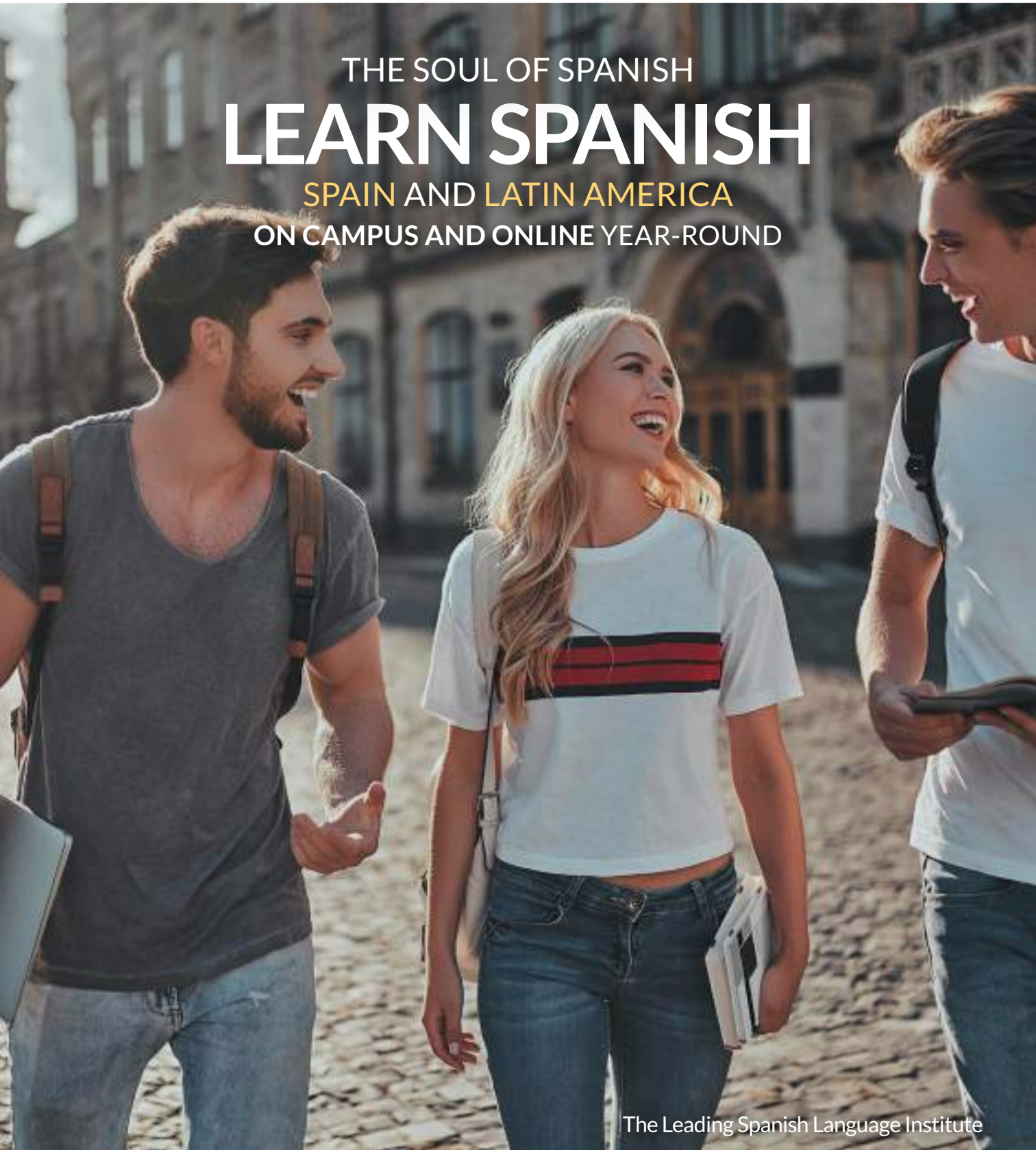


Enforex

Since 1989

THE SOUL OF SPANISH  
**LEARN SPANISH**

SPAIN AND LATIN AMERICA  
ON CAMPUS AND ONLINE YEAR-ROUND



The Leading Spanish Language Institute

PRICES 2022

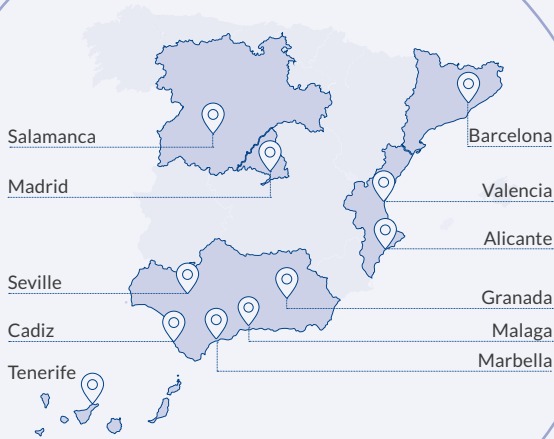
**ideal**  
education group

## ENFOREX IN THE WORLD

**40** In-country Campuses  
**13** Countries  
**8** Summer Camps  
**1** Online Campus



### SPAIN



## LEARN SPANISH WHILE COMBINING

40 TOP CAMPUSES  
IN SPAIN AND LATIN AMERICA  
32 DESTINATIONS ALL YEAR ROUND  
8 SUMMER CAMPS

Enforex provides you with a truly unique opportunity! Our 40 campuses are located in the liveliest, most important Spanish-speaking cities in Spain and Latin America, giving our students the opportunity to live an authentic Spanish immersion experience. Mix and match different locations, get to know different regions, accents, and traditions, and create an amazing life experience.

You can jump from one destination to another without missing classes and at no extra cost. Discover new places by combining 32 destinations with the same teaching method.

Contact us:  
T. +34 915 94 37 76  
[info@enforex.com](mailto:info@enforex.com)

### LATIN AMERICA



“We inspire students of all ages and nationalities to achieve their dreams through education and unique experiences.”



**Enforex**  
Since 1989

# Study Spanish Spain | Latin America | Online

11 CAMPUSES IN SPAIN | 21 IN LATIN AMERICA

8 SUMMER CAMPS IN SPAIN | 1 ONLINE CAMPUS

| SPANISH COURSES  | DESTINATIONS IN SPAIN   | DESTINATIONS IN LATIN AMERICA   |
|--|---|---|
| Intensive Spanish Programs                                       | Alicante, Barcelona, Cadiz, Granada, Madrid, Malaga, Marbella, Salamanca, Seville, Tenerife, Valencia | Mexico and Argentina, Bolivia, Chile, Colombia, Costa Rica, Cuba, Dominican Republic, Ecuador, Guatemala, Peru, Uruguay |
| DELE Exam Preparation  | Barcelona, Granada, Madrid, Malaga, Marbella, Salamanca, Seville, Tenerife, Valencia                  | Mexico  |
| CCSE Exam Preparation  | Barcelona, Granada, Madrid, Malaga, Marbella, Salamanca, Seville, Tenerife, Valencia                  | -   |
| SIELE Exam Preparation   | Barcelona, Granada, Madrid, Malaga, Marbella, Salamanca, Seville, Tenerife, Valencia                  | -   |
| Business Spanish and Madrid Chamber of Commerce Exam Preparation | Barcelona, Madrid, Malaga, Salamanca, Valencia  | -   |
| Private One-to-One classes                                       | Alicante, Barcelona, Cadiz, Granada, Madrid, Malaga, Marbella, Salamanca, Seville, Tenerife, Valencia | Mexico and Argentina, Bolivia, Chile, Colombia, Costa Rica, Cuba, Dominican Republic, Ecuador, Guatemala, Peru, Uruguay |
| Internship Program   | Barcelona, Madrid   | -   |
| Volunteer Program  | -   | Mexico, Colombia, Costa Rica, Guatemala, Peru   |
| Spanish Teachers' Training Lab                                   | Madrid, Malaga, Salamanca   | Mexico  |
| Pathways Program   University Exam Preparation   PAU/PCE         | Barcelona, Madrid, Malaga   | -   |
| Gap Year   | Alicante, Barcelona, Cadiz, Granada, Madrid, Malaga, Marbella, Salamanca, Seville, Tenerife, Valencia | Mexico  |
| International Summer Camps 5-18 years Cultural Immersion         | Barcelona, Madrid, Malaga, Marbella, Salamanca, Valencia  | -   |
| Junior Program 14-18 years                                       | Barcelona, Granada, Madrid, Malaga, Salamanca   | -   |
| Spanish for 50+  | Malaga, Marbella, Salamanca, Tenerife, Valencia   | Mexico  |
| Family Program   | Barcelona, Madrid, Malaga, Marbella, Salamanca, Valencia  | -   |
| Customized Group Program   | Barcelona, Granada, Madrid, Malaga, Marbella, Salamanca, Seville, Tenerife, Valencia                  | Mexico  |
| Winter Break   | Barcelona, Granada, Madrid, Malaga, Salamanca, Tenerife, Valencia                                     | Mexico  |
| ONLINE SPANISH COURSES   | ANYWHERE IN THE WORLD   |   |
| Intensive Spanish Programs                                       | All locations worldwide 24/7-365  |   |
| Private One-to-One classes                                       | All locations worldwide 24/7-365  |   |
| Spanish Teachers' Training Lab                                   | All locations worldwide 24/7-365  |   |
| DELE Exam Preparation  | All locations worldwide 24/7-365  |   |

# TOP 10 REASONS TO STUDY SPANISH WITH ENFOREX

## 1. PERSONALIZED

Our flexible programs start every Monday all year round and can be personalized to your interests and needs. You will be able to build your own perfect course by choosing when, where, and how to study by combining 32 destinations in 13 countries. Or combine your program with our Online classes before, during or after your stay with us in Spain or Latin America. You will also be able to personalize your on campus accommodation by choosing from four different ways to feel at home, away from home.

## 2. INTERACTIVE SMALL GROUPS | 4-8 STUDENTS

Our small classes range from an average of 4 students to a maximum of 8 (12 in high season), which allows for greater in-class participation and interaction while complying the social distancing measures. Our diverse faculty is made up of enthusiastic professionals with excellent academic qualifications and proven experience. Your language success is their motivation. Our weekly cultural workshops will have up to 12 students per class.

## 3. TOP DESTINATIONS | 32 +

Our schools are located in the heart of each destinations' lively, central neighborhoods of the best Spanish-speaking locations worldwide. Choose among 13 different countries and 32 locations. Every one of our schools is located in the heart of the city and boasts modern interiors, social spaces, and a welcoming staff.

## 4. FULL ACCREDITED | CV PROOF OF SPANISH SKILLS

Our schools meet the highest standards of excellence and are recognized by the most respected organizations worldwide, including the Instituto Cervantes, which has accredited all our Enforex schools in Spain and Latin America. We offer official university credits and transcripts for our Intensive Spanish Program in over 200 universities worldwide.

## 5. STUDENT-CENTERED

We take a personalized, student-centered approach to education where both students and teachers are actively engaged in the learning environment. Our experienced and motivated teachers are trained in different teaching methodologies to respond to the learning needs of each one of our students.

## 6. COVID-19 SAFE SCHOOL | 100% FLEXIBILITY

Our Flexibility Bookings Guarantee provides the reassurance you need to live the Enforex Experience! All Enforex schools are Certified as COVID-19 Safe School complying with the latest regulations. To give you complete peace of mind and keep things as simple as possible know that you can count on even greater bookings flexibility with no penalties. Our flexible booking conditions allow for alternative re-booking (continue with online classes), postponing your program (credit note) or cancelling with full refund (2 weeks of advance notice) [www.enforex.com/payment.html](http://www.enforex.com/payment.html)

## 7. ONLINE CLASSES | LIVE SPANISH 24/7-365 DAYS

Choose the right course for you from our 6+ Online Spanish Immersion, Tailor-made, and Specialized programs. Combine your program with online classes before, during or after your stay with us in Spain or Latin America. With our flexible 24/7-365 days online learning programs you can start a course any Monday in small groups or private sessions. No pre-recorded classes, all lessons are taught live through Microsoft Teams and other e-learning tools. Connect with our Spain and Latin American-based schools teachers, who will be guiding you in real time to ensure your learning success.

## 8. AN UNFORGETTABLE LIFE EXPERIENCE

Studying Spanish is much more than taking classes; it is an unforgettable life experience. Explore a new country, its culture, and its customs while mingling with locals. Stroll through its streets, shop in local food markets, and enjoy the spirited nightlife. Boost your experience while combining different destinations without missing classes.

## 9. INTERNATIONAL | 80 + NATIONALITIES

During your stay with us you will share your language travel adventure and experience with other students from over 80 nationalities. Discover a new culture, language, and country together and make friendships that will last a lifetime.

## 10. COMPLETE SERVICE | 24 H

We know that studying abroad is an adventure where you will create unforgettable memories. That's why we offer a wide range of diverse and engaging daily activities in the afternoon and weekend excursions in all our schools. Our helpful staff is always available to provide travel details, arrange accommodation and airport transfers, and assist with visa issues.

Enforex is the leading Spanish Language Institute with 32 destinations worldwide for over 33 years, since 1989. Embark on your language journey, discover new countries, accents, and traditions, and have an amazing life experience combining different destinations.

## OUR VALUES

Leadership  
Teamwork  
Empathy  
Innovation  
International  
Passion

# Embark on your language journey

## SPANISH COURSE

### IN SPAIN

|                                    |   |
|------------------------------------|---|
| Intensive Spanish Courses in Spain |   |
| ◦ Intensive Spanish 10 Program     | 6 |
| ◦ Intensive Spanish 20 Program     | 6 |
| ◦ Intensive Spanish 25 Program     | 7 |
| ◦ Intensive Spanish 30 Program     | 7 |
| Official Exam Preparation Courses  |   |
| DELE                               |   |
| ◦ DELE 20 Program                  | 8 |
| ◦ DELE 30 Program                  | 8 |
| CCSE or SIELE                      |   |
| ◦ CCSE or SIELE 30 Program         | 8 |
| Madrid Chamber of Commerce         | 8 |
| ◦ Business Spanish 10 Program      | 8 |
| Tailor-made 1 to 1 Courses         |   |
| ◦ Private One-to-One classes       | 9 |
| ◦ Semi-Private classes             | 9 |
| Work Experience                    |   |
| ◦ Internship Program               | 9 |

## ONLINE SPANISH COURSE

### ANYWHERE IN THE WORLD

|                                |    |
|--------------------------------|----|
| ◦ Intensive Spanish 20 Program | 12 |
| ◦ Private One-to-One classes   | 12 |
| ◦ Semi-Private classes         | 12 |
| ◦ Part-time 3 Program          | 13 |
| ◦ Spanish Teachers' Training   | 13 |
| ◦ DELE Exam Preparation        | 13 |

## LONG-TERM ACADEMIC PROGRAMS IN SPAIN

|                             |    |
|-----------------------------|----|
| Pathways Program            |    |
| University Exam Preparation | 14 |
| Gap Year                    | 14 |

## STUDY IN YOUR AGE GROUP

### KIDS, TEENS, JUNIORS, AND SENIORS

|                      |    |
|----------------------|----|
| Summer Camps 5-18    | 16 |
| Junior Program 14-18 | 16 |
| In Your Fifties 50+  | 17 |
| Family Program       | 17 |

### KIDS, TEENS AND JUNIORS

### INTERNATIONAL

### SUMMER CAMPS IN SPAIN

### CULTURAL IMMERSION

|                |    |
|----------------|----|
| Junior Program | 16 |
| Enforex Camps  | 18 |

### ACCOMMODATION

|                            |    |
|----------------------------|----|
| ◦ Homestay                 | 20 |
| ◦ Shared Student Apartment | 20 |
| ◦ Student Residence        | 21 |
| ◦ Private Apartment        | 21 |

### TRANSFER AND SERVICES

|                                  |    |
|----------------------------------|----|
| Airport Transfer in Spain        | 22 |
| Other services and fees in Spain | 23 |

### HOLIDAYS

|                                   |    |
|-----------------------------------|----|
| Spain national and local holidays | 23 |
|-----------------------------------|----|

### LIVE, LEARN, AND EXPLORE

#### IN SPAIN

|                                     |    |
|-------------------------------------|----|
| Included Activities and Excursions  | 24 |
| Additional Activities and Sports    |    |
| ◦ Mediterranean and Spanish Cooking | 24 |
| ◦ Flamenco   Latin dances           | 24 |
| ◦ Scuba Diving                      | 24 |
| ◦ Ski and Snowboard                 | 24 |
| ◦ Yoga                              | 24 |
| ◦ Golf   Tennis                     | 24 |
| ◦ Winter Break                      | 24 |

## SPANISH COURSE

### IN LATIN AMERICA

|                               |    |
|-------------------------------|----|
| Our school                    |    |
| MEXICO                        |    |
| Playa del Carmen              | 26 |
| Partner schools               |    |
| ARGENTINA                     |    |
| Buenos Aires                  | 27 |
| BOLIVIA will not open in 2022 |    |
| Sucre                         |    |
| CHILE                         |    |
| Santiago de Chile             | 27 |
| COLOMBIA                      |    |
| Cartagena de Indias           | 28 |
| COSTA RICA                    |    |
| San José                      | 28 |
| CUBA will not open in 2022    |    |
| Havana                        |    |
| DOMINICAN REPUBLIC            |    |
| Santo Domingo                 | 29 |
| ECUADOR will not open in 2022 |    |
| Quito                         |    |
| GUATEMALA                     |    |
| Antigua                       | 29 |
| PERU                          |    |
| Cusco                         | 30 |
| URUGUAY                       |    |
| Montevideo                    | 30 |
| GENERAL CONDITIONS            | 31 |

# INTENSIVE SPANISH COURSES

## Live the Spanish language in Spain

ALICANTE | BARCELONA | CADIZ | GRANADA | MADRID | MALAGA | MARBELLA | SEVILLE | SALAMANCA | TENERIFE | VALENCIA

### Application fee

€ 35

One-time

### Small groups

#### 4 to 8 students per class

In the Spanish culture and conversation workshops and during high season max. 12

### Each class lasts

55 minutes

(Alicante & Cadiz 45 min.)

### All levels

(A1-Beginner to C2-Proficiency)

### Start any Monday

Year-round

### Class Schedule

morning or afternoon

### Written and oral level test


### Certificate of attendance and completion

### Minimum age 14+

Alicante, Cadiz, Tenerife 17+  
Summer Camps 5-18 years

### Textbook and study materials € 35 per level

Alicante and Cadiz are partner schools and have their own conditions. Please contact our head office.

 The Intensive 20 course is also available online with year-round start dates and a flexible timetable. For more information see page 13.

# 10

10 classes per week

### Destinations in Spain

BARCELONA | GRANADA | MADRID  
MALAGA | MARBELLA | SALAMANCA  
SEVILLE | TENERIFE | VALENCIA

## INTENSIVE 10

If you **don't have much time** but learning Spanish or improving your level is one of your priorities, Enforex makes it easy for you. With fewer hours of class each day, this program is ideal for combining with other activities. Each day you will have 2 hours of interactive Spanish classes with students on the Intensive 20 course, after this you can use your free time to explore the city and practice your Spanish with the locals. This program is available for levels from elementary (A2) to advanced (C1).

### 10 GROUP CLASSES PER WEEK

| Course duration | PRICE PER WEEK |
|-----------------|----------------|
| 1-4 weeks       | € 130          |
| 5+ weeks        | € 120          |
| 12+ weeks       | € 110          |

### LONG-TERM ACADEMIC COURSES

|            |         |
|------------|---------|
| 12 weeks   | € 1.320 |
| 16 weeks   | € 1.760 |
| 24 weeks   | € 2.640 |
| 32 weeks   | € 3.520 |
| Extra week | € 110   |

# 20

20 classes per week

### Destinations in Spain

ALICANTE | BARCELONA | CADIZ | GRANADA  
MADRID | MALAGA | MARBELLA | SALAMANCA  
SEVILLE | TENERIFE | VALENCIA

## INTENSIVE 20

This course is designed for students who **want to begin communicating as quickly as possible, improve or get a proficiency degree in Spanish** and are eager to experience the culture of their chosen destination first hand. You will leave feeling more confident, with improved overall communications skills, fluency in Spanish, and complete independence. This program is available for all levels from complete beginner (A1) to proficiency (C2).

### 20 GROUP CLASSES PER WEEK

| Course duration | PRICE PER WEEK |
|-----------------|----------------|
| 1-4 weeks       | € 199          |
| 5+ weeks        | € 189          |
| 12+ weeks       | € 179          |
| 32+ weeks       | € 169          |

### LONG-TERM ACADEMIC COURSES

|            |         |
|------------|---------|
| 12 weeks   | € 2.148 |
| 16 weeks   | € 2.864 |
| 24 weeks   | € 4.296 |
| 32 weeks   | € 5.408 |
| Extra week | € 169   |

### + Personalize your course

Add to your Intensive 20 Spanish Program

|  |       |
|--|-------|
| 5 Weekly Private One-to-One classes*   | € 170 |
| 10 Weekly Private One-to-One classes** | € 330 |

\*Special price only valid when combining with a Spanish course and reserved and paid in advance. \*\***Specialized Private One-to-One classes** (example: Business Spanish, Medical Spanish, Legal Spanish, etc.) available at an additional fee of 15%.

**Start any Monday all year round. Average 4 students per class, maximum 8**  
(max. 12 in the Spanish culture and conversation workshops and during high season)

Enforex is the only institution in the Spanish-speaking world that offers you the possibility of combining 32 unique destinations with the same academic curriculum. Our proven teaching methodology is based on interactive classes and practical learning. Our Intensive Spanish Courses can be taken by themselves or complemented with additional or customized classes to meet your academic needs.

# 25

**20 classes per week + 5 Spanish culture and conversation workshops**

## Destinations in Spain

ALICANTE | BARCELONA | CADIZ | GRANADA  
MADRID | MALAGA | MARBELLA | SALAMANCA  
SEVILLE | TENERIFE | VALENCIA

## INTENSIVE 25

This course is perfect for students looking to **make solid and quick progress** in Spanish. You will be able to combine 20 interactive Spanish lessons per week with 5 extra Spanish culture and conversation classes. You'll benefit from a personalized and student-centered approach to education where teachers and students are actively engaged in the learning experience. This program is available for all levels from complete beginner (A1) to proficiency (C2).

### 25 GROUP CLASSES PER WEEK

| Course duration | PRICE PER WEEK |
|-----------------|----------------|
| 1-4 weeks       | € 225          |
| 5+ weeks        | € 215          |
| 12+ weeks       | € 205          |
| 32+ weeks       | € 195          |

### LONG-TERM ACADEMIC COURSES

|            |         |
|------------|---------|
| 12 weeks   | € 2.460 |
| 16 weeks   | € 3.280 |
| 24 weeks   | € 4.920 |
| 32 weeks   | € 6.240 |
| Extra week | € 195   |

### + Personalize your course

Add to your Intensive 25 Spanish Program

|  |       |
|--|-------|
| 5 Weekly Private One-to-One classes*   | € 170 |
| 10 Weekly Private One-to-One classes** | € 330 |

\*Special price only valid when combining with a Spanish course and reserved and paid in advance. \*\*Specialized Private One-to-One classes (example: Business Spanish, Medical Spanish, Legal Spanish, etc.) available at an additional fee of 15%.

# 30

**20 classes per week + 5 Spanish culture and conversation workshops + 5 semi-private classes**

## Destinations in Spain

BARCELONA | GRANADA | MADRID  
MALAGA | MARBELLA | SALAMANCA  
SEVILLE | TENERIFE | VALENCIA

## SUPER INTENSIVE 30

Learn Spanish with a combination of 25 group and culture classes + 5 One-to-One semi-private classes with 1 to 4 students per class (average 2), to get all the benefits of each type of learning environment and **further your knowledge of both the language and the culture**. Start your Super Intensive 30 program and discover everything you can gain from learning Spanish, no matter what your level is. This program is available for all levels from complete beginner (A1) to proficiency (C2).

### 30 GROUP CLASSES PER WEEK

| Course duration | PRICE PER WEEK |
|-----------------|----------------|
| 1-4 weeks       | € 335          |
| 5+ weeks        | € 325          |
| 12+ weeks       | € 315          |
| 32+ weeks       | € 309          |

### LONG-TERM ACADEMIC COURSES

|            |         |
|------------|---------|
| 12 weeks   | € 3.780 |
| 16 weeks   | € 5.040 |
| 24 weeks   | € 7.560 |
| 32 weeks   | € 9.888 |
| Extra week | € 309   |

### + Personalize your course

Add to your Super Intensive 30 Spanish Program

|  |       |
|--|-------|
| 5 Weekly Private One-to-One classes*   | € 170 |
| 10 Weekly Private One-to-One classes** | € 330 |

\*Special price only valid when combining with a Spanish course and reserved and paid in advance. \*\*Specialized Private One-to-One classes (example: Business Spanish, Medical Spanish, Legal Spanish, etc.) available at an additional fee of 15%.



Instituto Cervantes  
Centro Acreditado

Accredited by  
Instituto Cervantes

### Combine different locations at no extra cost

All our schools use the same academic teaching method in 32 destinations at the same price.

### Cancellation Guarantee € 59

per week (optional)  
Avoid any cancellation expenses before and after arrival.

### 100% Flexibility Bookings Guarantee Covid-19

Know that you can count on even greater bookings flexibility with no penalties.

### Holidays & Course break

One week off for holidays every 4 weeks of course taken; 1 week of advance notice is required.

Enforex is recognized by the Instituto Cervantes as an accredited center where students can take the CCSE, DELE, and SIELE exams. Enforex also collaborates with the Official Chamber of Commerce, Industry and Services of Madrid.

# CERTIFY YOUR SPANISH LEVEL

## Official Exam Preparation Courses

### LOCATION

#### DELE EXAM PREPARATION

At any of our schools in Spain

#### CCSE EXAM PREPARATION

At any of our schools in Spain

#### SIELE EXAM PREPARATION

At any of our schools in Spain

#### BUSINESS SPANISH AND CHAMBER OF COMMERCE EXAM PREPARATION

Barcelona, Madrid, Malaga, Salamanca, and Valencia

### OFFICIAL DELE EXAM DATES 2022

18/2 (A2), 1/4 (A1-C1), 21/5 (A1-C2), 1/7 (A2-C1), 9/9 (A2), 7/10 (A2-B2), 19/11 (A1-C2)

### OFFICIAL CCSE EXAM DATES 2022

27/1, 24/2, 31/3, 28/4, 26/5, 30/6, 28/7, 29/9, 27/10, 24/11.

### HOW TO FORMALLY SIGN UP FOR THE DELE OR CCSE EXAM

Exam and registration fees are not included. To formally sign up for the exam, registration and payment must be completed at least 10 weeks prior to the exam date, at the following website: [www.enforex.com/DELE](http://www.enforex.com/DELE)

We can help you by phone with the registration procedure within the stipulated deadlines: € 35

#### DELE exam fees 2022

Not yet confirmed, based on 2021  
A1: € 108, A2: € 130, B1: € 160, B2: € 190, C1: € 205, C2: € 220

#### CCSE exam fees 2022: € 85

Not yet confirmed, based on 2021

The DELE courses are also available online with year-round start dates and a flexible timetable. For more information see page 13.



**GUARANTEE**  
**95%**  
**DELE**  
**PASS RATE**



### DELE EXAM PREPARATION

DELE Spanish Diplomas are granted by the Instituto Cervantes in the name of Spain's Ministry of Education. DELE certifies test takers' level of understanding and command of the Spanish language. It is an official exam of great value for students who want or need to obtain an official certificate for universities and citizenship tests. Our DELE exam preparation courses will give you the skills you need to pass the exam. There are 6 levels, from A1 to C2, and you decide which level you wish to be examined on. The results confirm whether you have passed or failed the exam. Each exam consists of four sections: listening, reading, writing, and speaking. The certification does not expire. Exams are usually offered 5 times a year. Tests are taken on paper at our facilities.

Enforex is recognized by the Instituto Cervantes as an accredited center where students can take the DELE exam.

#### DELE 20

Certify your Spanish level. Enroll in our Intensive DELE 20 preparation course and ensure your success.

#### START DATES 2022

DELE preparation courses will start 2 or 4 weeks before official exam dates (although you can start a course any Monday, year round! Ask us for availability). **2-week course:** 7/2, 21/3, 9/5, 20/6, 29/8, 26/9, 7/11. **4-week course:** 24/1, 7/3, 25/4, 6/6, 15/8, 12/9, 24/10.

#### PROGRAM DETAILS

Group size: min. 3 - max. 8 students. Level: A2-C2. Min. age: 16.

[ALL OUR LOCATIONS IN SPAIN](#)

20 GROUP DELE CLASSES/WEEK

|         |         |
|---------|---------|
| 2 weeks | € 525   |
| 4 weeks | € 1.050 |

Preparation courses for levels C1 and C2 supplemental charge of € 50/week

#### DELE 30

Add to your Intensive 20 Spanish Program, 10 tailor-made Private DELE preparation classes and focus fully on the specific areas you wish to improve upon.

#### PROGRAM DETAILS

Start dates: Any Monday. Group size: min. 3 - max. 8 students. Level: All levels. Min. age: 16.

[ALL OUR LOCATIONS IN SPAIN](#)

20 GROUP SPANISH CLASSES + 10 PRIVATE DELE CLASSES

|                   |         |
|-------------------|---------|
| 1 week            | € 610   |
| 2 weeks           | € 1.220 |
| + additional week | € 610   |

Preparation courses for levels C1 and C2 supplemental charge of € 50/week

### CCSE AND SIELE EXAM PREPARATION

Enforex has created exam preparation courses for all those who want to pass the CCSE and/or SIELE Exam administered by the Instituto Cervantes with success.

CCSE is designed to obtain Spanish citizenship. The test affirms constitutional and socio-cultural knowledge of Spain and consists of 5 tasks with 25 multiple choice exercises. Exams are usually offered every last Thursday of each month (except for August and December), year-round. Tests are taken on paper at our facilities.

SIELE certifies your degree of Spanish proficiency through four tests that evaluate different linguistic skills. You can take either the global exam which certifies for all four skills or individual exams which certify each one individually. The exam is offered all year round, upon request. Tests are taken online at our facilities.

#### PROGRAM DETAILS

Start dates: Any Monday, year-round. Exam dates: All year round. Level: All levels. Group size: min. 3 - max. 8 students. Min. age: 18. Exam and registration fees are not included.

[ALL OUR LOCATIONS IN SPAIN](#)

20 GROUP SPANISH CLASSES + 10 PRIVATE CCSE OR SIELE CLASSES

|                   |         |
|-------------------|---------|
| 1 week            | € 610   |
| 2 weeks           | € 1.220 |
| + additional week | € 610   |

### BUSINESS SPANISH | CHAMBER OF COMMERCE EXAM PREPARATION

Get ready for the Business Spanish and Madrid Chamber of Commerce Exam with our 10-class preparation program. The exam is organized in collaboration with the University of Alcalá. This certificate is internationally recognized for Business Spanish and gives you an edge in the corporate world.

#### PROGRAM DETAILS

Start dates: 1<sup>st</sup> Monday of each month, year-round. Required level: B2. Group size: min. 3 - max. 8 students. Min. age: 18. Exam: Students can take the exam when taking 4 weeks of Business Spanish classes. Exam and registration fees are not included.

[BARCELONA | MADRID | MALAGA SALAMANCA | VALENCIA](#)

10 SMALL GROUP BUSINESS CLASSES/WEEK

|                   |       |
|-------------------|-------|
| 1 week            | € 370 |
| 2 weeks           | € 740 |
| + additional week | € 370 |



# PERSONALIZE YOUR COURSE

## Private classes

## Work experience

### LOCATION

#### PRIVATE CLASSES

At any of our schools in Spain

#### INTERNSHIP PROGRAM

Barcelona, Madrid



### ONE-TO-ONE TAILOR-MADE PROGRAM

Private classes are carefully crafted and tailored to your goals, needs, interests, and learning style. It's designed for those who want to **learn to communicate in Spanish with ease at their own pace**. They are a great way to improve specific areas, like pronunciation, reading comprehension, and vocabulary.

#### Private 1 to 1 | One student per class

##### PROGRAM DETAILS

**Start dates:** Any weekday. **Flexible schedule.** Personalized curriculum. **Class duration:** 55 minutes per class.

**Level:** All levels. Schedule in the morning or afternoon, to be confirmed with the school before or upon arrival.

📍 ALL LOCATIONS IN SPAIN

| PRICE PER WEEK (55 MIN. /CLASS) |       |
|---------------------------------|-------|
| 1 Private One-to-One class      | € 40  |
| 5 Private One-to-One classes    | € 185 |
| 10 Private One-to-One classes   | € 350 |
| 20 Private One-to-One classes   | € 640 |
| Additional Private class (20+)  | € 32  |

#### Semi-Private | Two or three students per class

##### PROGRAM DETAILS

**Start dates:** Any weekday. Schedule to be confirmed with the school before or upon arrival. **Level:** All levels.

**Group size:** min. 2 - max. 3 students.

📍 ALL OUR LOCATIONS IN SPAIN

| PRICE PER WEEK (55 MIN. /CLASS)       |       |
|---------------------------------------|-------|
| 1 Semi-Private class                  | € 30  |
| 5 Semi-Private classes                | € 140 |
| 10 Semi-Private classes               | € 260 |
| 20 Semi-Private classes               | € 480 |
| Additional Semi-Private classes (20+) | € 24  |

#### Tutorial One-to-One Online classes

Available online. Ideal for students who have already studied with us and want to keep up their Spanish skills after returning home.

| PRICE PER WEEK (55 MIN. /CLASS) |      |
|---------------------------------|------|
| 1 Online Private class          | € 46 |

### INTERNSHIP PROGRAM

**Gain experience and learn Spanish in a professional environment.** Choose an internship in a specific professional field with a company or organization in Spain. You can apply exclusively for the internship or combine it with one of our Spanish language courses. Internship candidates must have a minimum B1 superior level to be eligible.

#### Fields where placement is offered:

Hospitality, Marketing, Customer Care, Web Development, Graphic Design, Public Relations

##### PROGRAM DETAILS

Intensive Spanish 20 or 25 Program

1<sup>st</sup> Monday of each month, year-round

Required level: B1

Minimum age: 18

Training, evaluation, assessment, and professional orientation

It is mandatory to take out insurance against accidents

📍 BARCELONA | MADRID\*

| PRICE PER PROGRAM   |         |
|---|---------|
| 4-week Intensive Spanish 20 Program plus 4-12 weeks of Internship | € 1.996 |
| 4-week Intensive 25 Spanish Program plus 4-12 weeks of Internship | € 2.100 |
| Internship of 4 to 12 weeks without a Spanish course              | € 1.200 |
| Extra week Spanish course or Internship                           | € 225   |

\*In Barcelona Internship will be in a 4-star hotel. Ask us for availability in other destinations.

### CONDITIONS

#### Specialized Private One-to-One classes

Classes are held at our facilities. Should you be interested in classes outside the school or classes applied to specific sectors (for example, medical or business Spanish, or other special tailor-made private one-to-one classes), a surcharge of 15% will be applied.

#### Semi-Private classes

All students must have the same Spanish level, take the class together, and arrive together. Prices are per person.



All our 1 to 1 tailor-made programs are also available online with year-round start dates and with a flexible timetable. For more information see page 13.

# LIVE classes

€ 35  
Application +  
E-learning materials

## Group classes and One-to-One sessions

Small groups of 4 to 10 students per class (12 in high season and workshops) or private sessions

## All levels available

From complete Beginner (A1) to Proficiency (C2)

## Personalized feedback and guidance in real time

No pre-recorded classes, all lessons are taught live in small groups or private sessions

## Flexible time options

Morning and afternoon timetable in different world time zones

## Top qualified teachers

The same teachers as in our Spain and Latin American-based schools.

## E-book and multimedia e-learning platform

For your classes you will be making use of Microsoft Teams and other e-learning tools

## New courses starting every Monday

1 to 1 sessions any weekday!

## International setting

Share your online experience with other students from over 80 nationalities

## Certificate of completion

End-of-course certificate with the level of proficiency achieved

## Accredited by Instituto Cervantes

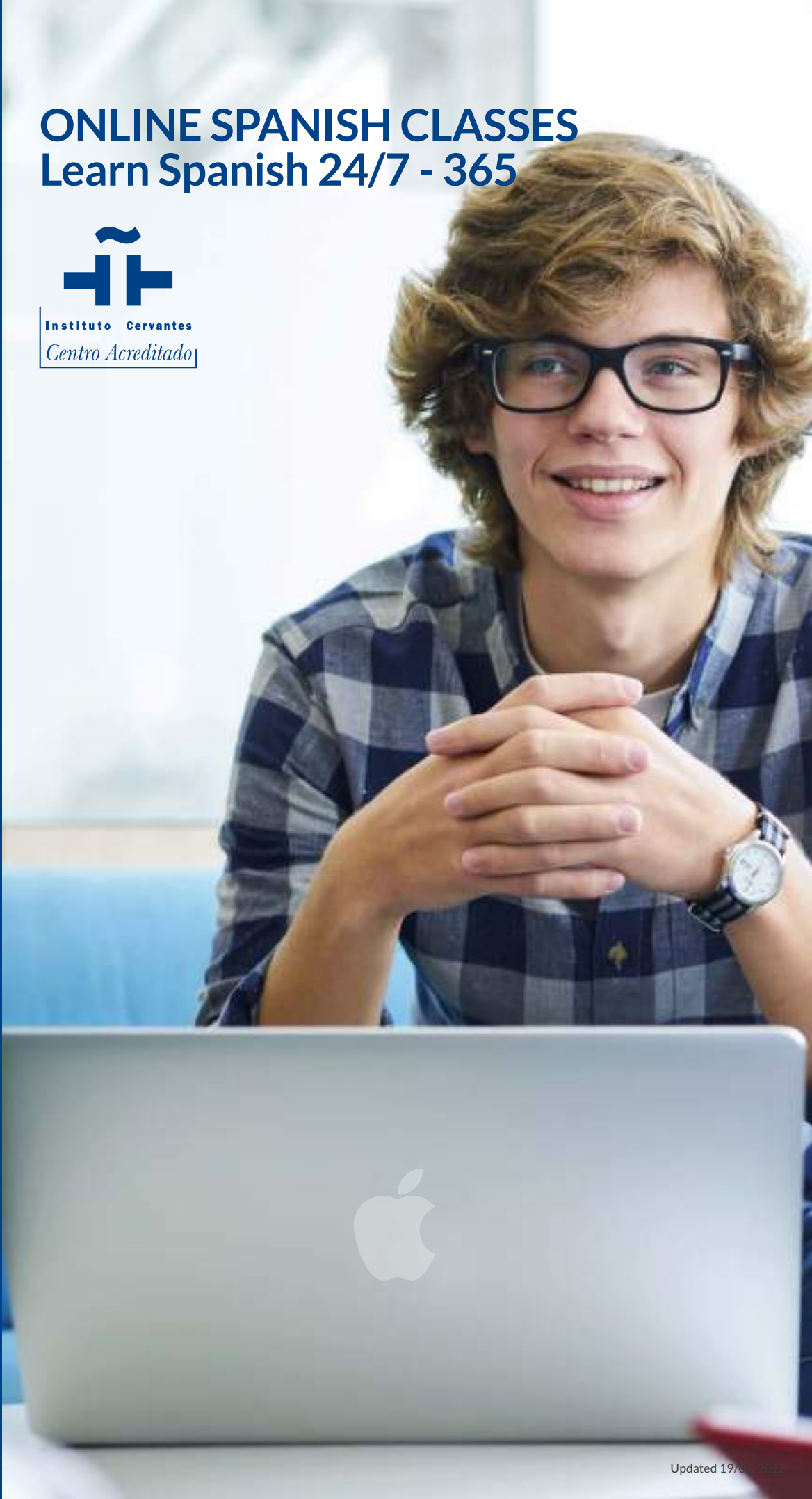
Our Enforex campuses meet the highest standards of excellence

# ONLINE SPANISH CLASSES

## Learn Spanish 24/7 - 365



Instituto Cervantes  
*Centro Acreditado*



# BENEFITS TO STUDY Spanish **ONLINE** with **ENFOREX**

## 1. LIVE CLASSES

Classes are live with real teachers providing 100% interaction and a high level of student involvement. Teachers can respond and teach in real time. During the classes you will interact with both your teacher and students from around the world.

## 2. COMFORT AND CONVENIENCE

Take your Spanish classes from the comfort of your home, anytime, anywhere! No travel expenses. No accommodation costs. Learn Spanish online before, during or after your stay in Spain or Latin America with the Leading Spanish Language Institute.

## 3. TOP QUALIFIED TEACHERS

Learn Spanish online and learn about different cultures with the same qualified native teachers as our Spain and Latin American-based schools. Our teachers have an average of 6 to 20 years of work experience teaching Spanish.

## 4. **33+** YEARS EXPERIENCE

Founded in 1989, Enforex is the most prestigious Spanish school in the sector. Our programs are certified by Instituto Cervantes. We take a personalized, student-centered approach to education where both students and teachers are actively engaged in the learning environment. Our experienced and motivated teachers are trained in different teaching methodologies to respond to the learning needs of each one of our students.

## 5. ACCREDITED CERTIFICATE

After completing the program, you will receive an accredited by the Instituto Cervantes certificate, documenting the current level of proficiency achieved. It is the proof of achievement in learning Spanish that shows you have the language skills that employers and universities are looking for.

## 6. **24/7-365** ONLINE SPANISH PROGRAMS

No matter what your needs are, Enforex has an online program for you. Choose the right course for you from our Online Spanish Programs: Online Spanish Immersion Programs (Part-time 3 and Intensive 20), Online Tailor-made One-to One Programs (Private and Semi-Private classes), and Online Specialized Programs (DELE Preparation, Teachers of Spanish Training). With our flexible 24/7-365 days online learning programs you can start a course any Monday, year-round in small groups or private sessions.



# ONLINE SPANISH IMMERSION COURSES

Live Spanish classes in small groups or private sessions from anywhere in the world!

No pre-recorded classes, all lessons are taught live and delivered by the same qualified teachers as in our Spain and Latin American-based schools.

## Application + E-learning materials

€ 35

For all online programs

## Flexible timetable

Morning or afternoon

Please use a time zone converter to find the exact time difference of your country using the mentioned cities as a reference.

**Small groups of max. 10 students**  
(12 in high season)

**Each class lasts 55 minutes**

## All levels A1-C2

From Beginner to Proficiency B2 for the Teachers' Training

## Start any Monday

Year-round

Teachers' Training 1<sup>st</sup> Monday of each month

**Online level test and certificate of completion**

## Minimum age 13+

16+ for the DELE courses

# 20

20 classes per week



## ONLINE INTENSIVE 20

The most efficient program

This online live group course is designed for students who want to begin communicating as quickly as possible. If you don't have much time but learning Spanish or improving your level is one of your priorities, Enforex makes it easy for you with fewer hours of interactive Spanish classes each day in small groups of average 4 to maximum 10 students (12 in high season and workshops).

|                      | 20H/WEEK   |
|----------------------|--|
| Frequency            | 4h/day   |
| Days of availability | Monday - Friday  |
| Timetable & Zones    | 9 am - 1 pm or 4 pm - 8 pm<br>CET Madrid, Europe UTC+1<br>9 am - 1 pm EST Cancun,<br>North America UTC-5 |
| Program length       | 2 weeks min.   |

| PRICES          | PRICE PER WEEK |
|-----------------|----------------|
| Course duration |                |
| 1-4 weeks       | € 185          |
| 5+ weeks        | € 175          |
| 12+ weeks       | € 165          |
| 32+ weeks       | € 155          |

# 1 to 1

5, 10 or 20 classes per week



## ONLINE PRIVATE CLASSES

The smart choice: create your own program

Tailor-made online Private One-to-One Spanish classes are designed to meet your own academic needs. Private lessons are a great way to improve your Spanish where you need extra help. Improve your speaking with real time conversations!

Also available Semi-Private classes\* for friends and family members and Specialized topic-specific private classes to fit your specific needs even more.

|                      | 5, 10 or 20H/WEEK  |
|----------------------|--|
| Frequency            | 5, 10 or 20 sessions   |
| Days of availability | Monday - Friday  |
| Timetable & Zones    | 9 am - 1 pm or 4 pm - 8 pm<br>CET Madrid, Europe UTC+1<br>9 am - 1 pm EST Cancun,<br>North America UTC-5 |
| Program length       | Flexible   |

| PRICES                 | PRICE PER PACK/PERSON/WEEK |                     |
|------------------------|----------------------------|---------------------|
| Packs                  | PRIVATE 1-TO-1             | SEMI-PRIVATE 2-TO-3 |
| 5 sessions             | € 215                      | € 165               |
| 10 sessions            | € 405                      | € 305               |
| 20 sessions            | € 740                      | € 555               |
| +20 additional session | € 37                       | € 28                |

### \*Semi-Private classes

With the teacher focusing on only 2 or 3 students per group, you'll see your Spanish skills grow in fewer time. All students must have the same level and take the class together.

### \*Specialized Private classes

Should you be interested in classes applied to specific sectors (for example, Business Spanish, Medical Spanish, Legal Spanish or other special tailor-made private one-to-one classes), a surcharge of 15% will be applied.

# 3

2 classes per week



## ONLINE PART-TIME 3

### The easy way

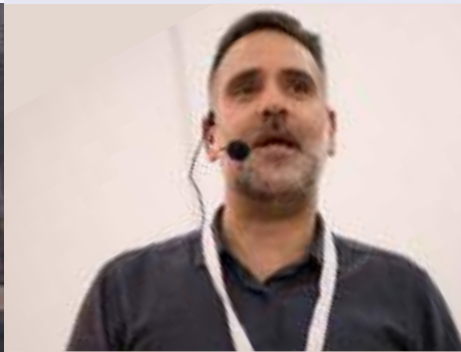
This program is ideal for people with limited time and the perfect combination with school, studies or work. You will improve fast while attending classes in the afternoon just twice a week. Classes consist of two sessions of one hour and a half on weekdays. Classes are taught in small groups of average 4 to maximum 10 students (12 in high season).

|                      | 3H/WEEK   |
|----------------------|---|
| Frequency            | 1,5h/day  |
| Days of availability | Monday and Wednesday or Tuesday and Thursday  |
| Timetable & Zones    | 7:30 pm - 9 pm<br>CET Madrid, Europe UTC+1<br>12:30 pm - 2 pm EST Cancun, North America UTC-5 |
| Program length       | 4 weeks min.  |

| PRICES          | PRICE PER WEEK |
|-----------------|----------------|
| Course duration |                |
| 4-7 weeks       | € 65           |
| 8-11 weeks      | € 60           |
| 12+ weeks       | € 55           |

# 20

20 classes per week



## ONLINE TEACHERS' TRAINING

### Enrich your classroom

This 2-week program is specifically developed for teachers of Spanish as a Foreign Language (ELE) who want to expand, update and improve their skills of foreign language teaching methodologies alongside other Spanish teachers from around the world. This program is 100% practical oriented with 3 hours daily group sessions and a total of 8 observation hours and 8 hours of projects.

|                      | 20H/WEEK  |
|----------------------|---|
| Frequency            | 3h/day group sessions   |
| Days of availability | Group sessions<br>Monday - Thursday<br>Observation & Projects<br>Monday - Friday  |
| Timetable & Zones    | Group sessions<br>7 pm - 10 pm<br>CET Madrid, Europe UTC+1<br>12 pm - 3 pm EST Cancun, North America UTC-5<br><b>Observation &amp; Projects:</b><br><b>Flexible, talk to your assigned teacher to specify a schedule.</b> |
| Program length       | 2 weeks   |

| PRICES          | PRICE PER PROGRAM |
|-----------------|-------------------|
| Course duration |                   |
| 2 weeks         | € 715             |

# 4 | 20

4 or 20 classes per week



## ONLINE DELE PREPARATION

### Certify your Spanish level comfortably from home

Our online DELE preparation course is perfect for curious, adventurous students who want to prepare for the DELE exam in the quickest way possible without moving from your home. Enroll in this preparation course and ensure your success with 4 or 20 hours weekly topic-specific DELE lessons. At Enforex, our DELE Exam Preparation students have a pass rate of over 95%!

|                      | 4H/WEEK   | 20H/WEEK   |
|----------------------|---|--|
| Frequency            | 2h or 4h/day  | 4h/day   |
| Days of availability | Monday and Wednesday or Saturday  | Monday - Friday  |
| Timetable & Zones    | Weekdays<br>7:30 pm - 9:30 pm CET<br>Madrid, Europe UTC+1<br>12:30 pm - 2:30 pm EST<br>Cancun, North America UTC-5<br>Weekends<br>9 am - 1 pm CET<br>Madrid, Europe UTC+1 | 9 am - 1 pm or<br>4 pm - 8 pm<br>CET Madrid,<br>Europe UTC+1<br>9 am - 1 pm EST<br>Cancun, North America UTC-5 |
| Program length       | 4 weeks min.  | 2 weeks min.   |

| PRICES            | PRICE PER PROGRAM |           |
|-------------------|-------------------|-----------|
| Course duration   | 4H/WEEK           | 20/H WEEK |
| 2 weeks           | -                 | € 565     |
| 4 weeks           | € 245             | € 1.125   |
| + additional week | € 55              | € 285     |

Exam and registration fees are not included. You can take the exam in your own country. Exam dates are the same worldwide but exam fees differ per country. Please check the Instituto Cervantes website of your country.

# LONG-TERM ACADEMIC PROGRAMS

## In Spain

### Pathways Program

### Study Abroad

#### LOCATION

PATHWAYS PROGRAM  
UNIVERSITY EXAM  
PREPARATION

Barcelona, Madrid, Malaga

#### GAP YEAR

At any of our schools in  
Spain and Mexico



### UNIVERSITY EXAM PREPARATION PAU/PCE

"PAU/PCE" stands for "Prueba y Acceso a la Universidad," or "University Entrance Exam," and it is one way of gaining **entrance to the Spanish higher education system**. The exam takes place in June and consists of a series of tests covering a variety of subjects such as Spanish language and literature, history, a foreign language, and geography. An Enforex course counselor will be available to give you personalized attention.

To apply for our course, you will need to have a high-intermediate or advanced level of Spanish (B2 to C2).

In addition to preparing you for the PAU/PCE Exam, we will also guide you through the admissions process to a Spanish university.

#### PROGRAM DETAILS

Level: B2-C2.

#### START DATES

|                       |               |
|-----------------------|---------------|
| January or October    | BARCELONA AND |
| February or September | MALAGA        |
|                       | MADRID        |
|                       | BARCELONA     |

25 GROUP PAU/PCE CLASSES/WEEK

34-week program | October to May € 7.870

22-week program | January to May € 6.390

#### MADRID

20 GROUP PAU/PCE CLASSES/WEEK

36-week program | September to May € 6.980

15-week program | February to May € 5.495

#### MALAGA

20 GROUP PAU/PCE CLASSES/WEEK

34-week program | October to May € 7.575

22-week program | January to May € 5.940

More information: [info@enforex.com](mailto:info@enforex.com)

### GAP YEAR

Did you just finish high school and still aren't sure what to do next? No matter which stage of life you are in, taking a break can be a wise decision and the best way to invest in your personal growth and develop soft skills like empathy, flexibility, and leadership.

Explore the Spanish-speaking world and discover its cultural diversity and linguistic heritage by **combining Spain and Mexico with one academic program**.

#### PROGRAM DETAILS

Intensive Spanish 20 Program.

**Level:** All levels. **Start dates:** Any Monday.

**Duration:** Study a semester, academic year, or customize your language journey.

**An Enforex certificate** of completion certifying your entire academic program

**Combine 2 continents:** Spain with Mexico.

**2-week DELE** exam preparation course.

**1-hour mentoring session** every 4 weeks.

Modern and strategically located facilities.

**Volunteering program** in Playa del Carmen, Mexico.

**One full day weekend excursion** every 4 weeks.

**The application fee** is charged only once.

#### CRAFT YOUR OWN LANGUAGE JOURNEY

A dedicated Enforex course counselor will be helping you organize every stage of your language journey. While you are on site our local staff members can help you with any questions or concerns. Contact us for your personalized assessment at [gapyear@enforex.com](mailto:gapyear@enforex.com)

#### ALL OUR LOCATIONS IN SPAIN & MEXICO

INTENSIVE SPANISH 20 PROGRAM

**Combine 2 continents!**

12 weeks € 2.380

24 weeks € 4.860

32 weeks € 6.090

# SPECIALIZED PROGRAMS

## In Spain

### Spanish Teachers' Training Lab

### We work together

#### LOCATION

#### SPANISH TEACHERS' TRAINING LAB

Madrid, Malaga, Salamanca

#### CUSTOMIZED GROUP PROGRAMS

At any of our schools in Spain and Mexico



Combine Spanish classes with the cultural activities, trips, and excursions of your choice!

### SPANISH TEACHERS

The program for Spanish teachers is specifically designed for teachers of Spanish as a Foreign Language (ELE) who would like to expand upon and update their knowledge of foreign language teaching methodologies and resources. Participants will **increase their pedagogical expertise** by discussing methodological topics, such as how to teach grammar and vocabulary, how to integrate culture into the lessons, and how to plan a class integrating new technologies; and by observing different Spanish language classes and reviewing other related issues that will inevitably enrich their classrooms back home.

#### PROGRAM DETAILS

20 group sessions (each lasting 55 minutes) about different aspects of Spanish teaching methodology. Participants will present their projects in the final session.

10 observation hours in immersive Spanish language classes of varying levels and content.

Readings and references about Spanish teaching and the European key competences for foreign language teachers.

Feedback from the teacher on the required final project presented by the participant.

Access to workrooms at the center, with Wi-Fi, for individual work.

Access to the free activities organized by the center during the course.

Course completion certificate

#### PROGRAM DETAILS

**Group size:** min. 3 - max. 16 students.

**Required level:** C1.

**Start date:** 4/7 and 18/7.

**Required class attendance:** 85%.

**Target students:** Spanish Language Teachers

 MADRID | MALAGA | SALAMANCA

20 GROUP CLASSES + 10 HOURS OF OBSERVATION + MENTORING

2 weeks

€ 650



See p. 13

This program is also available online with year-round start dates and with a flexible timetable.

### CUSTOMIZED GROUP PROGRAMS

At Enforex we design **personalized Spanish Immersion Programs** for groups of six or more students.

We have worked with teachers and professors from over 400 high schools and over 250 universities from all around the world, and we are the provider of many governmental and other official institutional programs worldwide.

Our **academic programs** are completely **customizable** and can be combined with special cultural events, tours, excursions, trips, different types of accommodations, activities, and anything else that will make your group's experience abroad unforgettable!

Our special Customized Group Programs Division is at your disposal to help you in any way we can. We look forward to sending you a personalized proposal adapted to your budget and needs. Please contact [groups@enforex.com](mailto:groups@enforex.com)

#### PROGRAM DETAILS

Personalized and 100% **FLEXIBLE**

32 top destinations to combine

Top facilities in the best locations

Open or closed group classes

Minimum 6 students

Excursions and activities included

Accommodation adapted to individual needs (homestay, student residence, student apartments, or hotel)

Airport transfer service

Supervision 24/7

We work with the best prices and quality

Personalized attention

**Free:** Accommodation and activities for 1 group leader for every 8 to 15 students, 2 group leaders for every 30 students, and 3 group leaders for every 45 students.

# STUDY IN YOUR AGE GROUP

## Kids, Teens, Juniors, and Seniors 5 to 18 years

### Summer Camps 5-18

### Junior Program 14-18

#### LOCATION

#### SUMMER CAMPS 5-18

Barcelona, Madrid, Malaga, Marbella, Salamanca, Valencia

#### JUNIOR PROGRAMS 14-18

Barcelona, Granada, Madrid, Malaga, Salamanca



### INTERNATIONAL SUMMER CAMPS 5-18 CULTURAL IMMERSION

JUNE, JULY, AND AUGUST | AGES 5 TO 18  
RESIDENCE, DAY CAMP, HOMESTAY  
SPANISH OR ENGLISH CLASSES

MIXED WITH  
**60%**  
SPANISH  
STUDENTS

Our international summer camps create a **supportive, friendly, and diverse environment** where students open their minds and immerse themselves in a new culture and language.

Our camps bring students together to create a truly global community where differences are celebrated. **60% of our student body is comprised of Spanish students and 40% of international students** representing over 80 nationalities.

Our innovative and proven teaching methodology based on cooperative and **project-based learning** provides for a fun, interactive, and effective way to learn Spanish or English. Sports, workshops, activities, and excursions are included in the camps experience.

Students also have the opportunity to explore their interests in optional courses covering a variety of topics from robotics, or creativity to debate and public speaking, yoga, or theater. Optional sports lessons are also available. We offer three different summer camps experiences: students can stay at our camps overnight, come just for classes and activities during the day, or stay with a local family.

#### All-inclusive

20 lessons per week, accommodation, full board, sports, activities, workshops, excursions, 4 meals/day, books, study materials, health insurance, 24-hour supervision.

#### START DATES

|               |  |
|---------------|--|
| June 26       | MALAGA   |
| July 3 and 17 | BARCELONA   MADRID   MALAGA<br>MARBELLA   SALAMANCA   VALENCIA |
| July 31       | BARCELONA BEACH   MALAGA<br>MARBELLA ELVIRIA   VALENCIA        |
| August 14     | BARCELONA BEACH   MALAGA<br>MARBELLA ELVIRIA   VALENCIA        |

#### PROGRAM DETAILS

Level: All levels. Ages: 5 - 18.

Group size: Average 8 - max. 15 students.

### JUNIOR PROGRAM 14-18

JULY AND AUGUST | AGES 14 TO 18  
ALL-INCLUSIVE PROGRAM | WEEKLY ACTIVITIES  
100% INTERNATIONAL STUDENTS

Specially designed for **teens who want to combine learning a second language and discovering a new culture.**

Our Junior Program brings young people aged 14 to 18 together from all over the world. It is all-inclusive (course + accommodation), with supervision during the classes and cultural activities and in the accommodations. Students can stay with host families in a homestay or in our residences with a shared double or triple room and full board. In addition to supervised activities, teens will be able to enjoy some independence and free time to explore their destination with new friends.

#### START DATES

|               |  |
|---------------|--|
| July 3 and 17 | BARCELONA   GRANADA   MADRID<br>MALAGA   SALAMANCA |
| July 31       | GRANADA   MADRID   MALAGA                          |

#### PROGRAM DETAILS

Level: All levels. Group size: Min. 3 - max. 15 students.

**ALL-INCLUSIVE:** Intensive Spanish 20 program, full board, accommodation in student residence or homestay, textbook, 3 afternoon activities per week, and 1 full day weekend excursion every 2 weeks.

#### PRICE

|            |                                |
|------------|--------------------------------|
|            | 📍 GRANADA   MALAGA   SALAMANCA |
| 2 weeks    | € 1.695                        |
| 4 weeks    | € 3.095                        |
| Extra week | € 955                          |

|            |                      |
|------------|----------------------|
|            | 📍 BARCELONA   MADRID |
| 2 weeks    | € 1.845              |
| 4 weeks    | € 3.295              |
| Extra week | € 1.045              |

#### OTHER FEES

|   |       |
|---|-------|
| Application fee   | € 35  |
| Cancellation Guarantee (optional) per week (for more information see p.27)        | € 69  |
| Travel health insurance (mandatory) per week (for more information see p.27)      | € 35  |
| Extra 10 hours of Spanish classes per week<br>Small groups of maximum 5 students. | € 300 |

👁 For more information see page 18.

Updated 19/01/2022



## Spanish for 50+



### IN YOUR FIFTIES 50+

This program has been designed to offer you a complete **language and cultural immersion at a pace that is right for you**. This time in your life can provide magical travel opportunities, letting you live thoroughly new experiences and continue to learn.

Our 2-week program is a motivating combination of Spanish classes and a rich, integrated cultural program.

Choose from **different destinations and signature local experiences and fiestas**.

#### START DATES

|                      |  |
|----------------------|--|
| February 21          | TENERIFE<br>World-Famous Carnival        |
| March 7              | VALENCIA<br>Las Fallas                   |
| October 10           | MALAGA<br>Mediterranean Lifestyle        |
| April 4              | MALAGA<br>Experience Semana Santa        |
| May 9 and October 10 | SALAMANCA<br>Culture and Architecture    |
| May 30               | MARBELLA<br>Spanish Fiesta - San Bernabé |

MALAGA | MARBELLA  
SALAMANCA | TENERIFE | VALENCIA

20 GROUP SPANISH CLASSES + 3 CULTURAL ACTIVITIES  
PER WEEK

2 weeks € 680

#### PROGRAM DETAILS

Level: All levels.

Group size: Minimum 3 students.

 This program is also available at our school in Mexico. For more information, see page 26.

## Families with children aged 5-18



### FAMILY PROGRAM

This completely customizable program is for families of all sizes and interests who wish to improve their Spanish or English levels in Spain.

**Design your own program to strike the perfect balance between language study, leisure, and family time.** While the youngest family members are busy living a truly international adventure in our summer camps, spreading their wings with our Junior Program, or taking advantage of one of our intensive courses, parents are free to follow their own path. Choose any of our group classes, one-to-one classes, or private classes just for the two of you. At the end of the day, the whole family can dive into the local culture together and enjoy Spain's enviable climate, acclaimed gastronomy, and Mediterranean beaches.

Our specialized course counselors will ensure all your needs are met. They can help organize special services, like childcare\*, family activities, excursions, and more! We also offer various premium accommodation options.

Let us know how you envision your ideal family vacation in Spain, and we'll make it happen.

#### PROGRAM DETAILS

BARCELONA | MADRID | MALAGA | MARBELLA  
SALAMANCA | VALENCIA

All year round. Summer camps are only offered during the months of July and August.

Completely customizable program

Intensive Spanish courses with 10, 20, 25, or 30 classes per week

Wide range of accommodation options

Parents can have their children aged 5-18 attend day camp or residential summer camps during summer months. During the year we can arrange day care options for the little ones\*.

Family activities and excursions

\*Childcare service is offered upon request and subject to availability.

#### LOCATION

##### SPANISH FOR 50+

Malaga, Marbella, Salamanca, Tenerife, Valencia in Spain and Playa del Carmen in Mexico

##### FAMILY PROGRAM

Barcelona, Madrid, Malaga, Marbella, Salamanca, Valencia in Spain

Ages 5-18

# INTERNATIONAL SUMMER CAMPS

## Cultural Immersion Summer Programs in Spain

JUNE, JULY, AND AUGUST | MIXED WITH 60% SPANISH STUDENTS | ALL-INCLUSIVE

### LOCATION

Barcelona, Madrid,  
Malaga, Marbella,  
Salamanca, Valencia



### Live an unforgettable experience with Spanish students

Summers at Enforex are always fun and full of life. For the past 33 years we have organized international summer programs and camps for children and teenagers, creating unforgettable experiences. Our camps help create lifelong friendships between campers from around the world. 60% of our student body is comprised of Spanish students and 40% of international students representing over 80 nationalities. All campers experience a true linguistic immersion while developing interpersonal skills and enjoying activities of all kinds.

### DESTINATIONS, DATES AND PRICES

| CAMPS | BARCELONA BEACH | MADRID | MALAGA  | MARBELLA CENTRO | MARBELLA ELVIRIA* | MARBELLA CHAPAS | SALAMANCA | VALENCIA |
|-------|-----------------|--------|---------|-----------------|-------------------|-----------------|-----------|----------|
| AGES  | 5 - 18          | 5 - 18 | 12 - 18 | 14 - 18         | 5 - 13 14 - 18    | 14 - 18         | 5 - 18    | 12 - 18  |

#### 1-WEEK SESSION

|                  |  |  |   |  |  |  |  |  |
|------------------|--|--|---|--|--|--|--|--|
| June 26 - July 2 |  |  | ✓ |  |  |  |  |  |
|------------------|--|--|---|--|--|--|--|--|

#### 2-WEEK SESSION

|                     |   |   |   |   |   |   |   |   |
|---------------------|---|---|---|---|---|---|---|---|
| July 3 - July 16    | ✓ | ✓ | ✓ | ✓ | ✓ |   | ✓ | ✓ |
| July 17 - July 30   | ✓ | ✓ | ✓ | ✓ | ✓ |   | ✓ | ✓ |
| July 31 - August 13 | ✓ |   | ✓ |   | ✓ | ✓ |   | ✓ |
| August 14 - 27      | ✓ |   |   |   | ✓ | ✓ |   |   |

#### ACCOMMODATION

|           |   |   |   |   |   |   |   |   |
|-----------|---|---|---|---|---|---|---|---|
| Residence | ✓ | ✓ | ✓ | ✓ | ✓ | ✓ | ✓ | ✓ |
| Homestay  |   | ✓ |   | ✓ |   |   | ✓ | ✓ |

#### OVERNIGHT RESIDENCE CAMP OR HOMESTAY PROGRAM

|               |         |         |         |         |         |         |         |         |         |
|---------------|---------|---------|---------|---------|---------|---------|---------|---------|---------|
| 1 week        | € 1.095 | € 1.095 | € 1.095 | € 1.095 | € 895   | € 895   | € 895   | € 895   | € 995   |
| 2 weeks       | € 1.890 | € 1.890 | € 1.890 | € 1.890 | € 1.690 | € 1.690 | € 1.690 | € 1.690 | € 1.790 |
| 4 weeks       | € 3.590 | € 3.590 | € 3.590 | € 3.590 | € 3.090 | € 3.090 | € 3.090 | € 3.090 | € 3.290 |
| 6 weeks       | € 5.290 |         | € 5.290 |         | € 4.590 |         |         |         | € 4.890 |
| Extra week ** | € 1.095 | € 1.095 | € 1.095 | € 1.095 | € 895   | € 895   | € 895   | € 895   | € 995   |

**All-inclusive:** 20 classes per week, accommodation, full board, activities, workshops, excursions, 4 meals/day (except in Marbella Centro and Valencia which include 3 meals/day), books, study materials, health insurance, sports, 24-hour supervision.  
**Level:** All levels. **Average:** 8 students per class. **Maximum:** 15 students per class. **1 lesson=** 45 min.

#### DAY CAMP (from Monday to Friday from 9 a.m. to 8 p.m.)

|            |       |       |       |       |       |       |       |       |       |
|------------|-------|-------|-------|-------|-------|-------|-------|-------|-------|
| 2 weeks    | € 850 | € 850 | € 850 | € 850 | € 850 | € 850 | € 850 | € 850 | € 850 |
| Extra week | € 450 | € 450 | € 450 | € 450 | € 450 | € 450 | € 450 | € 450 | € 450 |

**Level:** All levels. **Average:** 8 students per class. **Maximum:** 15 students per class. **1 lesson=** 45 min. The only meal provided is lunch. Students can participate in the activities and excursions organized on the weekends at an additional cost. Please note that students will have to find their own means of transportation to attend weekend activities at the camp.

#### LANGUAGE COURSE ONLY (from Monday to Friday from 9:00 a.m. to 12:30 p.m.)

|            |       |       |       |       |       |       |       |       |       |
|------------|-------|-------|-------|-------|-------|-------|-------|-------|-------|
| 2 weeks    | € 430 | € 430 | € 430 | € 430 | € 430 | € 430 | € 430 | € 430 | € 430 |
| Extra week | € 215 | € 215 | € 215 | € 215 | € 215 | € 215 | € 215 | € 215 | € 215 |

**Level:** All levels. **Average:** 8 students per class. **Maximum:** 15 students per class. **1 lesson=** 45 min.

Updated 19/01/2022

### CONDITIONS

\* Marbella Elviria:  
in July ages 5 to 13 and  
in August ages 5 to 18.

\*\* The option of adding an extra week is not guaranteed. For information about the availability of adding an extra week, please check with our Head Office.

Purchasing the daily camp bus service is mandatory for homestay programs. Transportation during weekends is not available. Please note that students will have to find their own means of transportation to attend weekend activities at the camp.



“The best part for me was being able to meet people from all over the world in one place. I learned more Spanish in two weeks than in my whole life in school classes back home.”

William . United Kingdom . 10 years old

DAY CAMP | RESIDENCE | HOMESTAY | AGES 5-18 | SPANISH OR ENGLISH CLASSES



## ALL-INCLUSIVE

20 lessons per week, accommodation, full board, sports, activities, workshops, excursions, 4 meals/day, books, study materials, health insurance, 24-hour supervision.

### OPTIONAL SPORTS

|  | SESSIONS / 2 WEEKS |       |
|--|--------------------|-------|
| <b>Soccer</b><br>Barcelona, Madrid, Malaga, Marbella, Valencia   | 16 sessions        | € 250 |
| <b>Tennis</b><br>Barcelona, Madrid, Marbella, Salamanca  | 12 sessions        | € 200 |
| <b>Paddle Tennis</b><br>Madrid, Malaga, Marbella, Salamanca  | 12 sessions        | € 200 |
| <b>Horseback Riding</b><br>Madrid, Marbella, Salamanca   | 12 sessions        | € 250 |
| <b>Golf</b><br>Marbella  | 18 sessions        | € 500 |
| <b>Swimming</b><br>Marbella (Las Chapas and Elviria)   | 8 sessions         | € 100 |
| <b>Sailing and Water Sports</b><br>Sailing, Standup Paddleboarding, Windsurfing, and Canoeing**<br>Barcelona | 8 sessions         | € 200 |
| <b>Sailing</b><br>Valencia   | 12 sessions        | € 200 |
| <b>Windsurfing and Standup Paddleboarding*</b><br>Valencia   | 8 sessions         | € 200 |

\* The choice of activities will depend on weather conditions.  
\*\* Students can enjoy 8 hours of water sports combining 2 hours of sailing (Optimist boat), 2 hours of windsurfing, 2 hours of canoeing, and 2 hours of standup paddleboarding each 2 weeks.

### OPTIONAL ACTIVITIES

|   | SESSIONS / 2 WEEKS |       |
|---|--------------------|-------|
| <b>Creativity and Theater</b><br>Malaga, Marbella   | 12 sessions        | € 200 |
| <b>Modern Dance</b><br>Malaga, Marbella             | 12 sessions        | € 200 |
| <b>Yoga</b><br>Madrid, Malaga, Marbella, Salamanca  | 12 sessions        | € 200 |
| <b>Entrepreneurship and Leadership</b><br>Madrid    | 12 sessions        | € 250 |
|   | SESSIONS / WEEK    |       |
| <b>Semi-private Intensive Spanish*</b><br>All Camps | 10 sessions        | € 300 |

\*Maximum 5 students per class. Sessions are in the afternoon.

#### DETAILS OPTIONAL SPORTS AND ACTIVITIES

The number of sessions per day and the duration of each session may vary depending on the sport or activity.

MIXED WITH  
**60%**  
SPANISH  
STUDENTS

### TRANSFER from airport/ bus or train station

|  |       |
|--|-------|
| <b>Airport transfer</b> one way  | € 85  |
| <b>Camp bus (Mon-Fri) daily transfer for 2 weeks</b><br>(optional; mandatory for homestay programs). Min. 6 students.<br>Pick-up and drop-off at bus stops (no door-to-door service).<br>Barcelona, Madrid, Malaga, Marbella | € 195 |
| <b>Round-trip shuttle from Madrid to</b><br>Malaga, Marbella, Valencia, or Salamanca<br>(Please check conditions before planning your trip)  | € 150 |
| <b>For more transfer options and other services</b>  | p. 24 |

### OTHER FEES

|  |          |
|--|----------|
| <b>Application fee</b>   | € 35     |
| <b>Cancellation guarantee</b> (optional)<br>per week, for more information see p. 27     | € 69     |
| <b>Study materials</b>   | Included |
| <b>Uniform</b> (optional)<br>5 T-shirts, 1 sweatshirt, 2 pairs of shorts, 1 baseball cap | € 100    |
| <b>Day camp</b> weekend activities per day   | € 100    |
| <b>Extra night</b>   | € 85     |



# STUDENT HOUSING

## Accommodation

### LOCATION

All locations in Spain

### Arrival/Departure time

From Sunday to Saturday

### Location

Shared apartments and residences: a 10-15 min. walk from the school.

Host families: a maximum of 15 minutes from the school in small cities and 30 minutes in big cities, either walking or by public transportation.

### Private bathroom

Available upon request, subject to availability (charges apply).

Double rooms have one private bathroom for both roommates.

### Special diets

If you have any dietary restrictions (lactose intolerance, vegan, gluten-free, etc.) just let us know in advance. Available in host families and residences upon request, for an additional charge.

### Additional days

There is a maximum of three extra days available upon request, for an additional charge and subject to availability. The cost of an entire week will be charged if you stay four or more days (not applicable to private apartments).

### Deposit

When staying in a student residence or shared student apartment a € 150 security deposit must be paid upon arrival (via Visa or Mastercard) and will be returned at the end of your stay, provided there are no damages to the residence or apartment.

### Combine

Combine different cities for free. You will receive a free overnight stay (Saturday-Sunday) when combining destinations.



## HOMESTAY

Bed linens, blankets, towels, Wi-Fi, and laundry service once a week are included. Some host families offer a bag lunch instead of a sit-down meal at home.

PER WEEK

### GRANADA | SALAMANCA

|                         |       |
|-------------------------|-------|
| Double room, half board | € 185 |
| Double room, full board | € 205 |
| Single room, half board | € 215 |
| Single room, full board | € 240 |

### ALICANTE\* | SEVILLE | VALENCIA

|                         |       |
|-------------------------|-------|
| Double room, half board | € 215 |
| Double room, full board | € 235 |
| Single room, half board | € 245 |
| Single room, full board | € 270 |

\*Double rooms in Alicante only available for two students traveling together.

### CADIZ\* | MALAGA | MARBELLA

|                         |       |
|-------------------------|-------|
| Double room, half board | € 230 |
| Double room, full board | € 250 |
| Single room, half board | € 265 |
| Single room, full board | € 285 |

\*Double rooms in Cadiz only available for two students traveling together.

### BARCELONA | MADRID | TENERIFE

|                         |       |
|-------------------------|-------|
| Double room, half board | € 255 |
| Double room, full board | € 290 |
| Single room, half board | € 290 |
| Single room, full board | € 320 |

## SHARED STUDENT APARTMENT

Wi-Fi, bed linens, access to a fully equipped kitchen, and welcome amenities are included. **Towels, meals, and cleaning services are not included.** All shared student apartments are close the school and reflect Enforex's high quality standards.

PER WEEK

### ALICANTE\* | CADIZ\* | GRANADA | MALAGA | MARBELLA SEVILLE | SALAMANCA | VALENCIA

|                        |       |
|------------------------|-------|
| Double room            | € 130 |
| Single room            | € 220 |
| High season supplement | € 50  |

|          |                      |          |                      |
|----------|----------------------|----------|----------------------|
| Alicante | 18/6-27/8            | Malaga   | 3/4-23/4 & 18/6-27/8 |
| Cadiz    | 13/2-5/3 & 26/6-10/9 | Seville  | 3/4-14/5             |
| Marbella | 18/6-27/8            | Valencia | 6/3-26/3             |

\*Double rooms in Alicante & Cadiz only available for two students traveling together.

### BARCELONA | MADRID | TENERIFE

|                        |       |
|------------------------|-------|
| Double room            | € 165 |
| Single room            | € 250 |
| High season supplement | € 50  |

Tenerife 13/2-5/3 & 18/6-27/8



## Long stay discounts | per month

Students who stay for a minimum of 6 months with Enforex will have special prices when staying in a shared student apartment.

### GRANADA | MALAGA | MARBELLA SALAMANCA | SEVILLE | VALENCIA

|             |             |
|-------------|-------------|
| Double room | € 425/month |
| Single room | € 595/month |

### BARCELONA | MADRID | TENERIFE

|             |             |
|-------------|-------------|
| Double room | € 495/month |
| Single room | € 695/month |

**Not included:** gas, electricity, water costs and heat: € 100/month. For private bathroom and high season supplements rates, see prices mentioned above. Total months in the same city. Full payment must be completed at the time of booking. In case of cancellation, if any refund or credit is applicable, the administration fees will be calculated based on the regular prices per week mentioned above.

Feel at home in the world. Live like a local.  
We offer four kinds of accommodations to our students:  
Homestay, student residence, shared student apartment, and private apartment.



## STUDENT RESIDENCE

Wi-Fi, bed linens, towels, meals, weekly cleaning, and welcome amenities are included. Kitchen and laundry facilities available.

Enjoy your stay with other international students.

PER WEEK

### GRANADA\* | SALAMANCA

|                         |       |
|-------------------------|-------|
| Double room, breakfast  | € 205 |
| Double room, half board | € 235 |
| Double room, full board | € 280 |
| Single room, breakfast  | € 255 |
| Single room, half board | € 285 |
| Single room, full board | € 325 |

\* Private bathroom included in Granada. The bathroom is shared by two people.

### MALAGA | SEVILLE | VALENCIA

|                         |       |
|-------------------------|-------|
| Double room, breakfast  | € 250 |
| Double room, half board | € 285 |
| Double room, full board | € 325 |
| Single room, breakfast  | € 340 |
| Single room, half board | € 370 |
| Single room, full board | € 415 |

### BARCELONA | MADRID

|                         |       |
|-------------------------|-------|
| Double room, breakfast  | € 265 |
| Double room, half board | € 305 |
| Double room, full board | € 345 |
| Single room, breakfast  | € 350 |
| Single room, half board | € 380 |
| Single room, full board | € 425 |

## PRIVATE APARTMENT

Our private apartments, in the heart of each destination, are a great option for those looking for more privacy and a relaxed environment.

They are located near Enforex schools and are perfectly furnished and equipped with bed linens and towels. We recommend private apartments especially for those traveling with their partners or families; they are the perfect way to feel at home from the minute you get to Spain.

For more details please contact us:  
[info@enforex.com](mailto:info@enforex.com)

### PLEASE NOTE:

An exact price quote will be given when consulting specific availability. This type of accommodation has special/additional conditions. Full payment must be completed at the time of booking, and in case of cancellation no refund or credit towards the purchase of other products will apply.



## STUDENT RESIDENCE AND SHARED STUDENT APARTMENT

- ✓ Mix of nationalities
- ✓ 100% satisfaction guarantee
- ✓ Top locations in the heart of each city

## OTHER SERVICES AND FEES

Extra night price per day, double or single room in Homestay: € 40

Shared student apartment: € 50

Student residence: € 60

Private bathroom (double or single room) Included in Granada residence € 55/week

Special diets e.g. lactose intolerance, vegan, gluten-free...

€ 20/week

(in Alicante € 45/week)

### ► +35%

In double rooms, the bedroom (with 2 single beds) is shared with your roommate.

A double room for individual use is available upon request at an additional charge of 35% of the single room price.

### ► -20%

Triple rooms are available in student apartments and residences when 3 students are traveling together; they are available at 20% off the double room price per student. This discount does not apply to high season supplemental charges.



# TRANSFER AND OTHER SERVICES

Fees and holidays in Spain



## TRANSFER SERVICE Airport/bus or train station

| ARRIVAL OR DEPARTURE ONE WAY                              | 1 PERSON | 2+ PEOPLE* |
|---|----------|------------|
| <b>ALICANTE</b>   |          |            |
| Alicante  | € 85     | € 50       |
| Valencia  | € 225    | € 135      |
| <b>BARCELONA</b>  |          |            |
| Barcelona   | € 85     | € 50       |
| Gerona/ Reus/ Tarragona                                   | € 225    | € 135      |
| <b>CADIZ</b>  |          |            |
| Jerez   | € 85     | € 50       |
| <b>GRANADA</b>  |          |            |
| Granada   | € 85     | € 50       |
| Malaga  | € 225    | € 135      |
| <b>MADRID</b>   |          |            |
| Madrid  | € 85     | € 50       |
| <b>MALAGA</b>   |          |            |
| Malaga  | € 85     | € 50       |
| Granada   | € 225    | € 135      |
| <b>MARBELLA</b>   |          |            |
| Malaga  | € 85     | € 50       |
| Gibraltar   | € 225    | € 135      |
| <b>SALAMANCA</b>  |          |            |
| Salamanca   | € 85     | € 50       |
| Madrid-Salamanca**<br>(Private and public transportation) | € 145    | € 110      |
| Madrid (Private transportation)                           | € 225    | € 135      |
| Valladolid  | € 225    | € 135      |
| <b>SEVILLE</b>  |          |            |
| Seville   | € 85     | € 50       |
| <b>TENERIFE</b>   |          |            |
| Tenerife Norte  | € 85     | € 50       |
| Tenerife Sur  | € 195    | € 115      |
| <b>VALENCIA</b>   |          |            |
| Valencia  | € 85     | € 50       |
| Alicante  | € 225    | € 135      |

\* 2+ people traveling together to the same address.

\*\* Salamanca bus private transfer from Madrid airport to bus station, transfer to Salamanca by public transportation, and private transfer from Salamanca bus station to your accommodation.



## OTHER SERVICES AND FEES

|  | PRICE |
|--|-------|
| <b>APPLICATION FEE FOR ANY ENROLLMENT TYPE</b><br>(one time only per year) | € 35  |

### CANCELLATION GUARANTEE

#### Any cancellation before and after arrival

Allows students to cancel program for any reason (i.e., examination, work, illness, visa issues...). Does not apply to private apartments or hotels.

|                |      |
|----------------|------|
| Price per week | € 59 |
|----------------|------|

|   |      |
|---|------|
| Price per week for Summer Camp and Junior Program | € 69 |
|---|------|

### TEXTBOOKS AND STUDY MATERIALS

|                                       |      |
|---------------------------------------|------|
| (First textbook is included in Cadiz) | € 35 |
|---------------------------------------|------|

### EXPRESS MAIL

#### For original certificates or invitation letters to:

|                                  |      |
|----------------------------------|------|
| Western Europe and USA or Canada | € 70 |
|----------------------------------|------|

|                |       |
|----------------|-------|
| Eastern Europe | € 120 |
|----------------|-------|

|                 |       |
|-----------------|-------|
| Other countries | € 150 |
|-----------------|-------|

### OPTIONAL ASSISTANCE WITH OFFICIAL DOCUMENTATION

|   |      |
|---|------|
| Administrative support and information at the school. | Free |
|---|------|

|   |       |
|---|-------|
| Personal assistance including visit to the corresponding city hall, bank, Travel health insurance (long-term students). | € 175 |
|---|-------|

|   |       |
|---|-------|
| Documents required for registration in the Municipal Census Record / "empadronamiento" (if needed). | € 270 |
|---|-------|

### HOLIDAYS & COURSE BREAK

|   |      |
|---|------|
| One week off for every 4 weeks of study; 1 week of advance notice is required (student will be charged for their full stay at our accommodation, including breaks, in order to keep their reservation). | Free |
|---|------|

|                             |      |
|-----------------------------|------|
| All other breaks requested. | € 75 |
|-----------------------------|------|

### CHANGES

|  |      |
|--|------|
| <b>Before arrival:</b> Changes to your confirmed booking (start dates, program, or services) can be made up to 10 days before your arrival. One change is free of charge. After the 1 <sup>st</sup> change, each change will be charged. | € 55 |
|--|------|

|   |      |
|---|------|
| <b>After arrival:</b> Change of destination, school, program, or accommodation. Subject to availability. Any difference in price will be charged to the student. Does not apply to summer camps. 4 weeks of advance notice is required. | € 55 |
|---|------|

### PLACEMENT AND ACCOMMODATION FEE

|   |      |
|---|------|
| When staying in accommodation without being enrolled in one of our programs and sharing a double room with an enrolled student. | Free |
|---|------|

|  |      |
|--|------|
| Per week when staying at accommodation without taking a course | € 55 |
|--|------|

### TRAVEL HEALTH INSURANCE FOR SPAIN

Mandatory for students under 18 and Internship Programs. Includes hospitalization and repatriation. This is a third party service. All claims and coverage issues will be handled directly between the insured party and the insurance company.

|                |      |
|----------------|------|
| Price per week | € 35 |
|----------------|------|

## SPAIN NATIONAL AND LOCAL HOLIDAYS

### 2022 National holidays

|           |                |
|-----------|----------------|
| JANUARY 1 | New Year's Day |
|-----------|----------------|

|           |          |
|-----------|----------|
| JANUARY 6 | Epiphany |
|-----------|----------|

|          |        |
|----------|--------|
| APRIL 15 | Easter |
|----------|--------|

|        |           |
|--------|-----------|
| MAY 1* | Labor Day |
|--------|-----------|

|           |                       |
|-----------|-----------------------|
| AUGUST 15 | Asunción de la Virgen |
|-----------|-----------------------|

|            |                          |
|------------|--------------------------|
| OCTOBER 12 | Spanish National Holiday |
|------------|--------------------------|

|            |                 |
|------------|-----------------|
| NOVEMBER 1 | All Saints' Day |
|------------|-----------------|

|            |                  |
|------------|------------------|
| DECEMBER 6 | Constitution Day |
|------------|------------------|

|            |                       |
|------------|-----------------------|
| DECEMBER 8 | Inmaculada Concepción |
|------------|-----------------------|

|              |           |
|--------------|-----------|
| DECEMBER 25* | Christmas |
|--------------|-----------|

### 2022 Local holidays

These dates are provisional and **will be confirmed in January 2022**. We are not responsible for changes made by central or local authorities.

Classes cancelled due to national or local holidays will not be made up or refunded. When more than one holiday falls in the same week (Monday-Friday), either one day of the cancelled classes can be made up or a 20% discount will be applied to the corresponding course week price for a 1-2 week program; if students prefer to receive the discount, they must notify us at the time of enrollment. One-to-One classes will always be made up.

\*Remember that public holidays falling on a Sunday are often celebrated on a weekday. Classes will start on Tuesday when a public holiday falls on a Monday. All schools are open year-round.

Please check [www.enforex.com/holidays-spain.html](http://www.enforex.com/holidays-spain.html) for updated holiday information and check with our Head Office to confirm exact dates before planning your trip; schools will be closed during official holidays.

|                 |  |
|-----------------|--|
| <b>ALICANTE</b> | March 19; April 14; April 18; April 28; June 23; June 24 |
|-----------------|--|

|                  |  |
|------------------|--|
| <b>BARCELONA</b> | April 18; June 6; June 24; September 24; September 26; December 26 |
|------------------|--|

|              |   |
|--------------|---|
| <b>CADIZ</b> | February 28; March 1; April 14; May 2; October 7; December 26 |
|--------------|---|

|                |  |
|----------------|--|
| <b>GRANADA</b> | February 28; April 14; May 2; May 26; June 16; December 26 |
|----------------|--|

|               |  |
|---------------|--|
| <b>MADRID</b> | January 1; January 6; April 14; April 15; May 1; May 2; May 16; July 25; November 9; December 26 |
|---------------|--|

|               |   |
|---------------|---|
| <b>MALAGA</b> | February 28; April 14; May 2; August 19; September 8; December 26 |
|---------------|---|

|                 |  |
|-----------------|--|
| <b>MARBELLA</b> | February 28; April 14; May 2; June 11; October 19; December 26 |
|-----------------|--|

|                  |  |
|------------------|--|
| <b>SALAMANCA</b> | April 14; April 23; May 2; June 12; September 8; December 26 |
|------------------|--|

|                |   |
|----------------|---|
| <b>SEVILLE</b> | February 28; April 14; May 2; May 4; June 16; December 26 |
|----------------|---|

|                 |   |
|-----------------|---|
| <b>TENERIFE</b> | February 2; April 14; May 3; May 30; July 12; December 26 |
|-----------------|---|

|                 |   |
|-----------------|---|
| <b>VALENCIA</b> | January 22; March 19; April 14; April 18; April 25; June 24 |
|-----------------|---|

# LIVE, LEARN AND EXPLORE

Join a vibrant and diverse community of students who live their Spanish language journey to the fullest. At Enforex we organize great extracurricular activities every week that are offered to all of our students. In addition to our planned events, you can book other incredible experiences with us.



## Included SCHOOL ACTIVITIES AND EXCURSIONS

Get a real cultural immersion experience by joining Enforex school activities and excursions.

Learning a new language is also about discovering the culture which surrounds it. That's why Enforex organizes plenty of afternoon and weekend cultural activities and excursions at all of our destinations.

You'll live the city in a unique way while getting an authentic look into how locals use the language in their daily lives. The activities and excursions organized may vary depending on the time of year.

## SOME EXAMPLES

- Adventure experiences
- Day and weekend excursions
- Tapas and wine tastings
- Cultural activities
- Walking tour
- Museums (Reina Sofia, Prado, Figueras, Dalí, Thyssen, Archaeology, etc.)
- Camp Nou, Bernabeu soccer stadiums
- Afternoon activities
- Sports

To find out more about what we will offer during your stay, contact us for prices and availability: [info@enforex.com](mailto:info@enforex.com)



### SKI AND SNOWBOARD

Upon request  
GRANADA  
Sierra Nevada | February 28-March 4

### YOGA

MADRID | MARBELLA  
Practice yoga while you learn Spanish with us. This program is offered for all expertise levels.

#### PROGRAM DETAILS

**Start dates:** Any Monday, year-round.  
**Includes:** 4 classes per week.

#### PRICE

1 week € 200

## Additional ACTIVITIES AND SPORTS

### MEDITERRANEAN AND SPANISH COOKING

BARCELONA | GRANADA  
MALAGA | SALAMANCA

#### PROGRAM DETAILS

**Start dates:** Any Monday, year-round.  
**Level:** A2 to C2.  
**Includes:** 10 classes per week.

#### PRICE

2 weeks € 395

### FLAMENCO | LATIN DANCES

AT ANY OF OUR SCHOOLS

#### PROGRAM DETAILS

**Start dates:** Any Monday, year-round.  
**Level:** All levels.  
**Includes:** 3 or 8 classes per week.  
There is a **minimum** of three students required to offer the course. Please note: students may need to purchase flamenco shoes.

#### PRICE

1 private class € 50

3 group classes per week € 125

8 group classes per week € 300

### SCUBA DIVING

TENERIFE

#### PROGRAM DETAILS

**Start dates:** Any Monday, year-round.  
**Level:** All levels. **PADI Dive Master:** Not available for students under 18. PADI qualification required. Students are required to provide a medical document (issued in their country of origin) certifying that they are fit to perform the activity.

#### PRICE

2 weeks

PADI Open Water beginner or advanced € 580

PADI Rescue Dive € 790

3 weeks

PADI Dive Master € 1.000

### GOLF | TENNIS

MARBELLA

#### PROGRAM DETAILS

**Start dates:** Any Monday, year-round.  
**Level:** All levels.  
**Includes:** 10 classes per week (5 tennis or golf classes + 5 practice classes). Clubs, rackets, and balls are provided.

#### PRICE

1 week € 380

### WINTER BREAK IN SPAIN

BARCELONA | GRANADA | MADRID  
MALAGA | SALAMANCA  
TENERIFE | VALENCIA

Brighten up your Winter Break with the sun of the Mediterranean while you learn Spanish in a new country and discover a different culture.

#### PROGRAM DETAILS

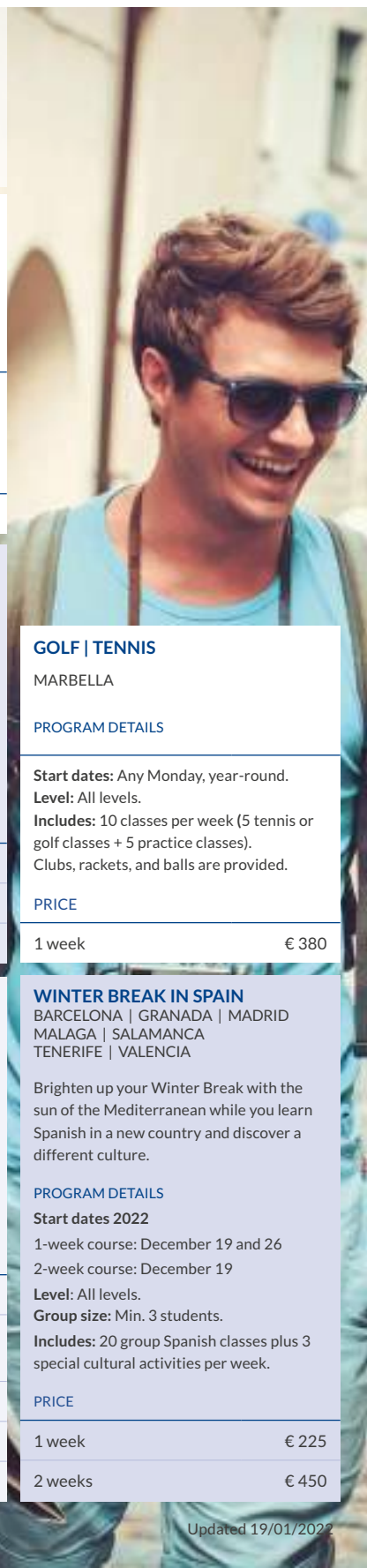
**Start dates 2022**  
1-week course: December 19 and 26  
2-week course: December 19

**Level:** All levels.  
**Group size:** Min. 3 students.  
**Includes:** 20 group Spanish classes plus 3 special cultural activities per week.

#### PRICE

1 week € 225

2 weeks € 450





# LIVE SPANISH IN LATIN AMERICA

Argentina, Bolivia, Chile, Colombia, Cuba, Dominican Republic, Ecuador, Guatemala, Mexico, Peru, Uruguay

Our school

**MEXICO**  
Playa del Carmen

Partner schools

**ARGENTINA**  
Buenos Aires

**BOLIVIA** Will not open in 2022  
Sucre

**CHILE**  
Santiago de Chile

**COLOMBIA**  
Cartagena de Indias

**COSTA RICA**  
San José

**CUBA** Will not open in 2022  
Havana

**DOMINICAN REPUBLIC**  
Santo Domingo

**ECUADOR** Will not open in 2022  
Quito

**GUATEMALA**  
Antigua

**PERU**  
Cusco

**URUGUAY**  
Montevideo



Our school

## PLAYA DEL CARMEN

### SPANISH COURSES

|                     | PER WEEK         |
|---------------------|------------------|
| <b>INTENSIVE 15</b> | 15 group classes |
| 1-4 weeks           | \$ 235           |
| 5+ weeks            | \$ 215           |
| 12+ weeks           | \$ 205           |

|                     | PER WEEK         |
|---------------------|------------------|
| <b>INTENSIVE 20</b> | 20 group classes |
| 1-4 weeks           | \$ 265           |
| 5+ weeks            | \$ 245           |
| 12+ weeks           | \$ 230           |

|                     | PER WEEK  |
|---------------------|---|
| <b>INTENSIVE 25</b> | 20 group classes + 5 culture and conversation workshops |
| 1-4 weeks           | \$ 335  |
| 5+ weeks            | \$ 315  |
| 12+ weeks           | \$ 299  |

|                           | PER WEEK  |
|---------------------------|---|
| <b>SUPER INTENSIVE 30</b> | 20 group classes + 5 culture and conversation workshops + 5 semi-private classes (up to 4 students) |
| 1-4 weeks                 | \$ 450  |
| 5+ weeks                  | \$ 440  |
| 12+ weeks                 | \$ 410  |

|                        | PER WEEK                                      |
|------------------------|---|
| <b>PREMIUM PROGRAM</b> | 20 mini-group classes + 10 One-to-One classes |
| 1-4 weeks              | \$ 580  |
| 5+ weeks               | \$ 570  |
| 12+ weeks              | \$ 550  |

| PRIVATE CLASSES        | One-to-One | Semi-private |
|------------------------|------------|--------------|
| 1 class                | \$ 27      | \$ 20        |
| 5 classes              | \$ 130     | \$ 100       |
| 10 classes             | \$ 255     | \$ 195       |
| 20 classes             | \$ 465     | \$ 350       |
| Additional class (20+) | \$ 22      | \$ 17        |



### PROGRAM DETAILS

Accredited by



Application fee  
\$ 45 (one time)

Cancellation Guarantee  
\$ 69 per week (optional)

Small groups  
4 to maximum 8 students

Class duration  
Each class lasts 55 minutes


Study materials  
will be provided

Minimum age 17  
All year round

Travel health insurance  
\$ 40 per week  
(mandatory for students  
under 18)

#### 2022 Holidays

1/1, 7/2, 21/3, 15/4, 18/4, 1/5, 15/5,  
16/9, 12/10, 01/11, 21/11, 25/12  
We are not responsible for changes  
made by central or local authorities.

 The Intensive 20, 1-to-1  
tailor-made, DELE exam  
preparation, and Spanish  
Teachers' Training programs  
are also available online with  
year-round start dates and with  
a flexible timetable. For more  
information see page 13.

### CONDITIONS ACCOMMODATION

Arrival/Departure time  
From Sunday to Saturday.

Double rooms  
Only available for two students  
traveling together

Accredited by  
Instituto Cervantes

### SPECIALIZED PROGRAMS

#### DELE EXAM PREPARATION

Exam dates 2022: 18/2 (A2), 1/4 (A1-C1), 21/5 (A1-C2), 1/7 (A2-C1), 9/9 (A2), 7/10 (A2-B2), 19/11 (A1-C2).

Tests are taken on paper at our facilities.

Start dates for group course (4 weeks before official exam):  
24/1, 7/3, 25/4, 6/6, 15/8, 12/9, 24/10.

Start dates for private classes: Any Monday. Level: All levels.

Group size: min. 3 - max. 8 students. Minimum age: 16.

To formally register for the exam, the registration and  
payment must be completed at least 10 weeks prior to the  
exam date, at the following website: [www.enforex.com/DELE](http://www.enforex.com/DELE)

|                            | 20 classes/week |
|----------------------------|-----------------|
| 4 weeks of group classes   | \$ 1.150        |
| 4 weeks of private classes | \$ 1.850        |

#### SPANISH FOR 50+ PROGRAM

Start dates: October 24. Program: Day of the Dead.

Level: All levels. Group size: min. 3 students.

|                          | 20 group classes + 3 special cultural activities/week |
|--------------------------|---|
| 2 weeks of group classes | \$ 655  |

#### SPANISH TEACHERS' TRAINING LAB

Start dates: January 10.

Group size: min. 3 - max. 16 students. Required level: C1.

|                          | 20 group classes + 10 hours of observation + mentoring |
|--------------------------|--|
| 2 weeks of group classes | \$ 765   |

#### WINTER BREAK IN PLAYA DEL CARMEN

Start dates: 1-week course: 21/11/22, 28/11/22, 19/12/22,  
26/12/22; 2-week course: 21/11/22, 19/12/22.

Level: All levels. Group size: min. 3 students.

|                          | 20 group classes + 3 special cultural activities/week |
|--------------------------|---|
| 1 week of group classes  | \$ 335  |
| 2 weeks of group classes | \$ 670  |

#### VOLUNTEER PROGRAM

|   |          |
|---|----------|
| 4 weeks of Intensive Spanish 20 + Volunteer | \$ 1.260 |
| 4 weeks of Intensive Spanish 25 + Volunteer | \$ 1.540 |
| Volunteering processing fee                 | \$ 200   |
| Volunteering fee without Spanish course     | \$ 650   |

#### LEISURE PROGRAM

|  | 5 group classes |
|--|-----------------|
| 1 week of Culture or Cooking           | \$ 130          |
| 1 week of Scuba Diving or Kite Surfing | upon request    |

### ACCOMMODATION PRICE PER WEEK

#### HOST FAMILY | HOMESTAY

|  |        |
|--|--------|
| Double room, breakfast   | \$ 265 |
| Double room, half board  | \$ 300 |
| Single room, breakfast   | \$ 310 |
| Single room, half board  | \$ 345 |
| Extra night  | \$ 45  |
| Special diet upon request<br>(e.g. lactose intolerance, vegan, gluten-free...) | \$ 15  |

#### SHARED STUDENT APARTMENT

|                       |        |
|-----------------------|--------|
| Double room, no meals | \$ 260 |
| Single room, no meals | \$ 325 |
| Extra night           | \$ 55  |

#### STUDENT RESIDENCE

|  |        |
|--|--------|
| Double room, no meals  | \$ 375 |
| Double room, breakfast   | \$ 410 |
| Extra night, double room   | \$ 85  |
| Single room, no meals  | \$ 440 |
| Single room, breakfast   | \$ 475 |
| Extra night, single room   | \$ 95  |
| Special diet upon request<br>(e.g. lactose intolerance, vegan, gluten-free...) | \$ 15  |

#### AIRPORT TRANSFER

|                                 |       |
|---------------------------------|-------|
| From Cancun to Playa del Carmen | \$ 85 |
|---------------------------------|-------|

# Argentina

Partner school

## BUENOS AIRES

### SPANISH COURSES

| INTENSIVE 20               | 20 group classes                         |        |
|----------------------------|--|--------|
| Price per week             |  | \$ 215 |
| SUPER INTENSIVE 30         | 20 group + 10 One-to-One classes         |        |
| Price per week             |  | \$ 535 |
| BUSINESS SPANISH           | 20 One-to-One Business classes           |        |
| Price per week             |  | \$ 690 |
| PRIVATE ONE-TO-ONE CLASSES |  |        |
| Per class                  |  | \$ 32  |
| INTENSIVE 20 AND TANGO     | 20 group classes + 3 group dance classes |        |
| Price per week             |  | \$ 275 |

### SPECIALIZED PROGRAMS

| DELE EXAM PREPARATION OR MEDICAL SPANISH |       |
|--|-------|
| Per class                                | \$ 35 |

These are tailor-made One-to-One courses. The duration and skill level of the course depend on what prior knowledge the participant has. We will be happy to advise and establish a specific study plan.

In case there is only one student in the Intensive Spanish classes, there will be a 50% reduction in class hours. One-to-One: 20% surcharge outside of office hours (9 am to 6 pm, Monday through Friday). During the weeks with holidays 1 extra class will be added per each day left of the week. This is a **partner school** of Enforex. General Conditions do not apply.

### ACCOMMODATION

| HOMESTAY, BREAKFAST, SINGLE ROOM         |        |
|--|--------|
| price per week                           | \$ 290 |
| HOMESTAY, HALF BOARD, SINGLE ROOM        |        |
| price per week                           | \$ 355 |
| SHARED APARTMENT, NO MEALS, DOUBLE ROOM* |        |
| price per week                           | \$ 390 |
| SHARED APARTMENT, NO MEALS, SINGLE ROOM  |        |
| price per week                           | \$ 250 |

\* Price per room/two people. Double rooms are only available for two students traveling together and upon request.



### AIRPORT TRANSFER

|                   |       |
|-------------------|-------|
| From Buenos Aires | \$ 75 |
|-------------------|-------|

# Chile

Partner school

## SANTIAGO DE CHILE

### SPANISH COURSES

|                            | PER WEEK                         |
|----------------------------|----------------------------------|
| INTENSIVE 20               | 20 group classes                 |
| 1-3 weeks                  | \$ 210                           |
| 4+ weeks                   | \$ 190                           |
| SUPER INTENSIVE 30         | 20 group + 10 One-to-One classes |
| 1-3 weeks                  | \$ 275                           |
| 4+ weeks                   | \$ 250                           |
| PRIVATE ONE-TO-ONE CLASSES | 2 One-to-One classes (min.)      |
| Per class                  | \$ 30                            |

### SPECIALIZED PROGRAMS

| DELE EXAM PREPARATION, BUSINESS, OR MEDICAL SPANISH |       |
|---|-------|
| Per class   | \$ 35 |

These are tailor-made One-to-One courses. The duration and skill level of the course depend on what prior knowledge the participant has. We will be happy to advise and establish a specific study plan.

In case there is only one student in the Intensive Spanish classes, there will be a 50% reduction in class hours. During the weeks with holidays 1 extra class will be added per each day left of the week. This is a **partner school** of Enforex. General Conditions do not apply.

### ACCOMMODATION

| HOMESTAY, BREAKFAST, DOUBLE ROOM**  |          |
|-------------------------------------|----------|
| price per week                      | \$ 430   |
| 4 weeks*                            | \$ 1.430 |
| Extra night                         | \$ 70    |
| HOMESTAY, HALF BOARD, DOUBLE ROOM** |          |
| price per week                      | \$ 570   |
| 4 weeks*                            | \$ 1.825 |
| Extra night                         | \$ 85    |

| HOMESTAY, BREAKFAST, SINGLE ROOM |        |
|----------------------------------|--------|
| price per week                   | \$ 240 |
| 4 weeks*                         | \$ 760 |
| Extra night                      | \$ 40  |

| HOMESTAY, HALF BOARD, SINGLE ROOM |        |
|-----------------------------------|--------|
| price per week                    | \$ 300 |
| 4 weeks*                          | \$ 960 |
| Extra night                       | \$ 50  |

| SHARED APARTMENT, NO MEALS, DOUBLE ROOM** |        |
|---|--------|
| price per week                            | \$ 300 |
| 4 weeks*                                  | \$ 960 |
| Extra night                               | \$ 50  |

| SHARED APARTMENT, NO MEALS, SINGLE ROOM |        |
|---|--------|
| price per week                          | \$ 180 |
| 4 weeks*                                | \$ 600 |
| Extra night                             | \$ 30  |

\* Price for blocks of 4 weeks. If you reserve more weeks the additional week price will be applied.

\*\* Price per room/two people. Double rooms are only available for two students traveling together and upon request.

### AIRPORT TRANSFER

|                        |       |
|------------------------|-------|
| From Santiago de Chile | \$ 55 |
|------------------------|-------|

CHILE  
Santiago de Chile

ARGENTINA  
Buenos Aires

### PROGRAM DETAILS

**Application fee**  
\$ 45 per school

### Small groups

ARGENTINA  
Maximum 7 students per class

CHILE  
Maximum 8 students per class

### Class duration

ARGENTINA  
Each class lasts 55 minutes

CHILE  
Each class lasts 45 minutes

### Study materials

will be provided

### Minimum age

ARGENTINA  
Minimum age 17

CHILE  
Minimum age 16

### Travel health insurance

ARGENTINA  
\$ 40 per week (optional;  
mandatory for students under 18

CHILE  
\$ 40 per week (optional;  
mandatory for students under 18

### 2022 Holidays

ARGENTINA  
01/01, 28/02, 24/03, 15/04, 25/05,  
20/06, 15/08, 10/10, 28/11, 08/12

CHILE  
01/01, 15/04, 01/05, 21/05, 27/06, 16/07,  
15/08, 18/09, 19/09, 10/10, 31/10, 01/11,  
08/12, 25/12

### CONDITIONS ACCOMMODATION

Arrival/Departure time  
From Sunday to Saturday.

ARGENTINA

Private bathroom  
available on request in shared  
apartments: \$ 30/week

CHILE

Private bathroom  
available on request in homestay  
single/double room: \$ 50/\$ 70 week

COSTA RICA  
San José  
COLOMBIA  
Cartagena de Indias

## PROGRAM DETAILS

**Application fee**  
\$ 45 per school

**Small groups**  
COLOMBIA  
Maximum 8 students per class  
COSTA RICA  
Maximum 8 students per class

**Class duration**  
COLOMBIA  
Each class lasts 60 minutes  
COSTA RICA  
Each class lasts 55 minutes

**Study materials**  
will be provided

**Minimum age**  
COLOMBIA  
Minimum age 18

COSTA RICA  
Minimum age 16  
(with parental consent)

**Travel health insurance**  
COLOMBIA  
\$ 40 per week (optional)  
COSTA RICA  
\$ 40 per week (optional);  
mandatory for students under 18

**2022 Holidays**  
COLOMBIA  
01/01, 10/01, 21/03, 14/04, 15/04,  
30/05, 20/06, 27/06, 04/07, 20/07,  
07/08, 15/08, 17/10, 07/11, 14/11,  
08/12, 25/12

COSTA RICA  
01/01, 11/04, 14/04, 15/04, 16/04,  
02/05, 25/07, 02/08, 15/08, 15/09,  
24/12, 25/12, 31/12

## CONDITIONS ACCOMMODATION

Arrival/Departure time  
From Sunday to Saturday.

COLOMBIA  
Additional accommodation fee: \$ 45

# Colombia

Partner school

## CARTAGENA DE INDIAS

### SPANISH COURSES

|                     | PER WEEK         |
|---------------------|------------------|
| <b>INTENSIVE 15</b> | 15 group classes |
| 1-3 weeks           | \$ 200           |
| 4-7 weeks           | \$ 160           |
| 8+ weeks            | \$ 150           |
| <b>INTENSIVE 20</b> | 20 group classes |
| 1-3 weeks           | \$ 220           |
| 4-7 weeks           | \$ 180           |
| 8-11 weeks          | \$ 170           |
| 12+ weeks           | \$ 160           |

### PRIVATE ONE-TO-ONE CLASSES

|               |        |
|---------------|--------|
| 10 One-to-One | \$ 280 |
| 20 One-to-One | \$ 400 |

### SPECIALIZED PROGRAMS

| MEDICAL SPANISH | 20 group classes + 5 private medical classes |
|-----------------|--|
| 1-3 weeks       | \$ 300                                       |
| 4-7 weeks       | \$ 250                                       |
| 8-11 weeks      | \$ 240                                       |
| 12+ weeks       | \$ 235                                       |

### VOLUNTEER PROGRAM

|            |          |
|------------|----------|
| 4 weeks    | \$ 1,000 |
| Extra week | \$ 250   |

**Volunteer Program** includes a processing fee, 4-week Intensive 20 Spanish Course with 2 afternoons per week volunteering in the chosen project.

In the rare event that only 1 or 2 students are enrolled in a course in the same level group, the school reserves the right to change a group course into a Private or Semi-Private Program. If this happens, there will be a 60% reduction in class hours. One-to-One: \$5 per class surcharge when taking classes outside facilities.

This is a **partner school** of Enforex. General Conditions do not apply.

### ACCOMMODATION

|   | PER WEEK |
|---|----------|
| <b>HOMESTAY, BREAKFAST</b>                    |          |
| Single room                                   | \$ 240   |
| Extra night                                   | \$ 40    |
| <b>HOMESTAY, HALF BOARD</b>                   |          |
| Single room                                   | \$ 280   |
| Extra night                                   | \$ 47    |
| <b>HOMESTAY, BREAKFAST, PRIVATE BATHROOM</b>  |          |
| Single room                                   | \$ 300   |
| Extra night (single room)                     | \$ 50    |
| <b>HOMESTAY, HALF BOARD, PRIVATE BATHROOM</b> |          |
| Single room                                   | \$ 340   |
| Extra night                                   | \$ 57    |

### AIRPORT TRANSFER

|                     |       |
|---------------------|-------|
| Cartagena de Indias | \$ 40 |
|---------------------|-------|

# Costa Rica

Partner school

## SAN JOSÉ

### SPANISH COURSES

|                                   | PER WEEK                              |
|-----------------------------------|---------------------------------------|
| <b>INTENSIVE 20</b>               | 20 group classes                      |
| 1-3 weeks, price per week         | \$ 410                                |
| 4 weeks                           | \$ 1.620                              |
| Additional week                   | \$ 390                                |
| <b>SUPER INTENSIVE 30</b>         | 20 group classes + 10 private classes |
| 1-3 weeks, price per week         | \$ 710                                |
| 4 weeks                           | \$ 2.785                              |
| Additional week                   | \$ 660                                |
| <b>PRIVATE ONE-TO-ONE CLASSES</b> | 20 One-to-One classes                 |
| 1-3 weeks                         | \$ 710                                |
| 4 weeks                           | \$ 2.785                              |
| Additional week                   | \$ 660                                |

### SPECIALIZED PROGRAMS

#### VOLUNTEER PROGRAM

|                 |          |
|-----------------|----------|
| 4 weeks         | \$ 1.620 |
| Additional week | \$ 195   |

**Volunteer Program** includes shared room in a traditional homestay, two meals/day, airport greeting at San José, orientation, project management, and 4 hours/day of work Monday-Friday. Not included a special project surcharge of \$ 100/week. This 4-week program does not include Spanish classes but includes weekly salsa dance classes and a conversation program.

This is a **partner school** of Enforex. General conditions do not apply.

### ACCOMMODATION

#### HOMESTAY, HALF BOARD, SHARED ROOM up to 5 people

|                           |        |
|---------------------------|--------|
| 1-3 weeks, price per week | \$ 250 |
| 4 weeks                   | \$ 935 |
| Additional week           | \$ 235 |
| Extra night               | \$ 45  |

#### HOMESTAY, HALF BOARD, SINGLE ROOM

|                           |          |
|---------------------------|----------|
| 1-3 weeks, price per week | \$ 290   |
| 4 weeks                   | \$ 1.085 |
| Additional week           | \$ 275   |
| Extra night               | \$ 50    |



### AIRPORT TRANSFER

|               |          |
|---------------|----------|
| From San José | Included |
|---------------|----------|



# Dominican Republic

# Guatemala

Partner school

## SANTO DOMINGO

### SPANISH COURSES

|  | PRICE PER WEEK |
|--|----------------|
| <b>INTENSIVE 20</b> 20 group classes                       |                |
| 1- 4 weeks   | \$ 215         |
| 5+ weeks   | \$ 195         |
| <b>SUPER INTENSIVE 30</b> 20 group + 10 One-to-One classes |                |
| 1- 4 weeks   | \$ 395         |
| 5+ weeks   | \$ 355         |
| <b>INTENSIVE BILDUNGSURLAUB 30</b> 30 group classes        |                |
| 1 week   | \$ 320         |
| 2 weeks  | \$ 640         |
| <b>PRIVATE ONE-TO-ONE CLASSES</b> 10 One-to-One classes    |                |
| 1- 4 weeks   | \$ 200         |
| 5+ weeks   | \$ 170         |

In the rare event that only 1 or 2 students are enrolled in a course in the same level group, the school reserves the right to change a group course into a Private or Semi-Private Program. If this happens, there will be a 50% reduction in class hours (not applicable for the Bildungsurlaub Program, you will have min. 30 classes). If a class falls on an official holiday, the school will offer students enrolled in group courses an optional 2-hour group Spanish and Culture class as compensation.

This is a **partner school** of Enforex. General conditions do not apply.



### ACCOMMODATION

|   | PRICE PER WEEK |
|---|----------------|
| <b>HOMESTAY, BREAKFAST, SINGLE ROOM</b>               |                |
| 1-4 weeks   | \$ 280         |
| 5+ weeks  | \$ 265         |
| Extra night   | \$ 40          |
| <b>HOMESTAY, HALF BOARD, SINGLE ROOM</b>              |                |
| 1-4 weeks   | \$ 330         |
| 5+ weeks  | \$ 310         |
| Extra night   | \$ 50          |
| <b>SHARED APARTMENT/STUDIO, NO MEALS, SINGLE ROOM</b> |                |
| 1-4 weeks   | \$ 220         |
| 5+ weeks  | \$ 205         |
| Extra night   | \$ 35          |

### AIRPORT TRANSFER

|                    |        |
|--------------------|--------|
| From Santo Domingo | \$ 50* |
|--------------------|--------|

\*Prices are starting from and on demand, please contact us to confirm prices.

Partner school

## ANTIGUA

### SPANISH COURSES

|   | PRICE PER WEEK |
|---|----------------|
| <b>INTENSIVE 20</b> 20 group classes                            |                |
| 1-3 weeks, price per week                                       | \$ 125         |
| 4 weeks   | \$ 485         |
| Additional week   | \$ 105         |
| <b>SUPER INTENSIVE 30</b> 20 group classes + 10 private classes |                |
| 1-3 weeks, price per week                                       | \$ 205         |
| 4 weeks   | \$ 795         |
| Additional week   | \$ 180         |
| <b>PRIVATE ONE-TO-ONE CLASSES</b> 20 One-to-One classes         |                |
| 1-3 weeks   | \$ 205         |
| 4 weeks   | \$ 795         |
| Additional week   | \$ 180         |

### SPECIALIZED PROGRAMS

#### VOLUNTEER PROGRAM

|                 |          |
|-----------------|----------|
| 4 weeks         | \$ 1.360 |
| Additional week | \$ 160   |

Volunteer Program includes shared room in a traditional homestay, two meals/day, airport greeting at Guatemala City, orientation, project management, and 4 hours/day of work Monday-Friday. Not included a special project surcharge of \$ 100/week. This 4-week program does not include Spanish classes but includes weekly salsa dance classes and a conversation program.

This is a **partner school** of Enforex. General conditions do not apply.

### ACCOMMODATION

#### HOMESTAY, HALF BOARD, SHARED ROOM up to 5 people

|                           |        |
|---------------------------|--------|
| 1-3 weeks, price per week | \$ 190 |
| 4 weeks                   | \$ 725 |
| Additional week           | \$ 185 |
| Extra night               | \$ 35  |

#### HOMESTAY, HALF BOARD, SINGLE ROOM

|                           |        |
|---------------------------|--------|
| 1-3 weeks, price per week | \$ 225 |
| 4 weeks                   | \$ 845 |
| Additional week           | \$ 215 |
| Extra night               | \$ 40  |

#### STUDENT RESIDENCE, HALF BOARD, SHARED ROOM up to 5 people

|                           |        |
|---------------------------|--------|
| 1-3 weeks, price per week | \$ 225 |
| 4 weeks                   | \$ 845 |
| Additional week           | \$ 215 |
| Extra night               | \$ 40  |

#### STUDENT RESIDENCE, HALF BOARD, SINGLE ROOM

|                           |          |
|---------------------------|----------|
| 1-3 weeks, price per week | \$ 290   |
| 4 weeks                   | \$ 1.085 |
| Additional week           | \$ 270   |
| Extra night               | \$ 50    |

### AIRPORT TRANSFER

|                                |       |
|--------------------------------|-------|
| From Guatemala city to Antigua | \$ 30 |
|--------------------------------|-------|

#### PROGRAM DETAILS

**Application fee**  
\$ 45 per school

#### Small groups

**DOMINICAN REPUBLIC**  
Maximum 7 students per class

**GUATEMALA**  
Maximum 8 students per class

#### Class duration

**DOMINICAN REPUBLIC**  
Each class lasts 45 minutes

**GUATEMALA**  
Each class lasts 55 minutes

**Study materials**  
will be provided

#### Minimum age

**DOMINICAN REPUBLIC**  
Minimum age 16

**GUATEMALA**  
Minimum age 17

#### Travel health insurance

**DOMINICAN REPUBLIC**  
\$ 40 per week (optional);  
mandatory for students under 18

**GUATEMALA**  
\$ 40 per week (optional);  
mandatory for students under 18

#### 2022 Holidays

**DOMINICAN REPUBLIC**  
01/01, 21/01, 27/02, 15/04, 01/05, 16/06,  
24/09, 25/12

**GUATEMALA**  
01/01, 11/04, 14/04, 15/04, 16/04, 02/05,  
10/05, 25/07, 15/09, 20/10, 01/11, 24/12,  
25/12, 31/12

#### CONDITIONS ACCOMMODATION

**Arrival/Departure time**  
From Sunday to Saturday.

**DOMINICAN REPUBLIC**

**Laundry service**  
is available for an extra fee

**Private bathroom**  
available in homestay or shared  
apartment: \$ 55/week

**Minimum age**  
for stays in shared apartments  
and studios: 18

**Double room**  
available only for two people  
traveling together and upon request.  
Please contact us for rates.



PERU  
Cusco

URUGUAY  
Montevideo

**PROGRAM DETAILS**

**Application fee**  
\$ 45 per school

**Small groups**

PERU  
Maximum 8 students per class

URUGUAY  
Maximum 6 students per class

**Class duration**

PERU  
Each class lasts 55 minutes

URUGUAY  
Each class lasts 55 minutes

**Study materials**  
will be provided

**Minimum age**

PERU  
Minimum age 16  
(with parental consent)

URUGUAY  
Minimum age 18

**Travel health insurance**

PERU  
\$ 40 per week  
(optional; mandatory  
for students under 18)

URUGUAY  
\$ 40 per week (optional)

**2022 Holidays**

PERU  
01/01, 14/04, 15/04, 16/04, 02/05,  
16/06, 24/06, 29/06, 28/07, 29/07,  
30/08, 08/10, 01/11, 08/12, 24/12,  
25/12, 31/12

URUGUAY  
01/01, 01/05, 18/07, 25/08, 25/12

**CONDITIONS  
ACCOMMODATION**

**Arrival/Departure time**  
From Sunday to Saturday.

# Peru

Partner school  
**CUSCO**

**SPANISH COURSES**

|                                   |                                  |
|-----------------------------------|----------------------------------|
| <b>INTENSIVE 20</b>               | 20 group classes                 |
| 1-3 weeks, price per week         | \$ 160                           |
| 4 weeks                           | \$ 620                           |
| Additional week                   | \$ 150                           |
| <b>SUPER INTENSIVE 30</b>         | 20 group + 10 One-to-One classes |
| 1-3 weeks, price per week         | \$ 290                           |
| 4 weeks                           | \$ 1.105                         |
| Additional week                   | \$ 240                           |
| <b>PRIVATE ONE-TO-ONE CLASSES</b> | 20 One-to-One classes            |
| 1-3 weeks, price per week         | \$ 290                           |
| 4 weeks                           | \$ 1.105                         |
| Additional week                   | \$ 240                           |

**SPECIALIZED PROGRAMS**

|                          |          |
|--------------------------|----------|
| <b>VOLUNTEER PROGRAM</b> |          |
| 4 weeks                  | \$ 1.360 |
| Additional week          | \$ 160   |

**Volunteer Program** shared room in a traditional homestay, two meals/day, Cusco airport transfer, orientation, project management, and 4 hours/day of work Monday-Friday. Not included a special project surcharge of \$ 100/week. This 4-week program does not include Spanish classes but includes weekly salsa dance classes and a conversation program.

This is a **partner school** of Enforex. General Conditions do not apply.

**ACCOMMODATION**

|   |        |
|---|--------|
| <b>HOMESTAY, HALF BOARD, SHARED ROOM</b> up to 5 people |        |
| 1-3 weeks, price per week                               | \$ 190 |
| 4 weeks   | \$ 725 |
| Additional week   | \$ 185 |
| Extra night   | \$ 35  |
| <b>HOMESTAY, HALF BOARD, SINGLE ROOM</b>                |        |
| 1-3 weeks, price per week                               | \$ 225 |
| 4 weeks   | \$ 845 |
| Additional week   | \$ 215 |
| Extra night   | \$ 40  |



**AIRPORT TRANSFER**

|            |          |
|------------|----------|
| From Cusco | Included |
|------------|----------|

# Uruguay

Partner school  
**MONTEVIDEO**

**SPANISH COURSES**

|                                   |                                    |
|-----------------------------------|------------------------------------|
| <b>INTENSIVE 20</b>               | 20 group classes                   |
| Price per week                    | \$ 245                             |
| <b>SUPER INTENSIVE 30</b>         | 20 group + 10 One-to-One classes   |
| Price per week                    | \$ 545                             |
| <b>PRIVATE ONE-TO-ONE CLASSES</b> |                                    |
| Per class                         | \$ 30                              |
| <b>INTENSIVE 20 AND TANGO</b>     | 20 group + 3 private dance classes |
| Price per week                    | \$ 395                             |

**SPECIALIZED PROGRAMS**

|                              |       |
|------------------------------|-------|
| <b>DELE EXAM PREPARATION</b> |       |
| Per class                    | \$ 32 |

**DELE exam preparation** is a tailor-made course. The duration and skill level of the course depend on what prior knowledge the participant has. We will be happy to advise and establish a specific study plan.

In case there is only one student in the Intensive Spanish classes, there will be a 50% reduction in class hours. One-to-One: 20% surcharge outside of office hours (9 am to 6 pm, Monday through Friday). During the weeks with holidays 1 extra class will be added per each day left of the week. This is a **partner school** of Enforex. General Conditions do not apply.

**ACCOMMODATION**

|  |        |
|--|--------|
| <b>HOMESTAY, BREAKFAST, SINGLE ROOM</b>  |        |
| price per week                           | \$ 290 |
| <b>HOMESTAY, HALF BOARD, SINGLE ROOM</b> |        |
| price per week                           | \$ 415 |



**AIRPORT TRANSFER**

|                 |       |
|-----------------|-------|
| From Montevideo | \$ 75 |
|-----------------|-------|



## APPLICATION FORM

Please send this form (2 pages) to Enforex Spanish Language School or our representative.

### PERSONAL DETAILS

|  |   |              |
|--|---|--------------|
| LAST NAME  | HOME ADDRESS  |              |
| FIRST NAME   | CITY  | ZIP CODE     |
| SEX <input type="checkbox"/> Male <input type="checkbox"/> Female                | STATE   |              |
| DAY/MONTH/YEAR OF BIRTH  | COUNTRY   |              |
| NATIONALITY  | PHONE   | MOBILE PHONE |
| PASSPORT N°  | OCCUPATION  |              |
| NATIVE LANGUAGE  | E-MAIL  | SKYPE®       |
| NAME, ADDRESS, AND PHONE NUMBER OF PERSON WE SHOULD CONTACT IN CASE OF EMERGENCY | <input type="checkbox"/> Partner <input type="checkbox"/> Parent <input type="checkbox"/> Other |              |

WHAT IS YOUR LEVEL OF SPANISH?

A0 (Complete Beginner)  A1 (Beginner)  A2 (Upper Beginner)  B1 (Intermediate)  B2 (Upper Intermediate)  C1 (Advanced)  C2 (Superior)

Do you have a learning disability?  Yes  No Please specify:

Have you ever studied Spanish before?  Yes \*  No

\*If yes, please indicate name, address, phone number, and email of your Spanish teacher and institution:

HOW DID YOU HEAR ABOUT US FOR THE FIRST TIME?

Friend  University/ school  Government institution  Search engine  www.enforex.com  Travel agency  Fair  Advertisement  Link  Other

Please specify the name or location of the option you have chosen:

### SELECTED COURSE(S) AND DESTINATION(S)

| COURSE NAME | DESTINATION or ONLINE | N° WEEKS | CLASSES/WEEK | START DATE | FINISH DATE |
|-------------|-----------------------|----------|--------------|------------|-------------|
| a.          |                       |          |              |            |             |
| b.          |                       |          |              |            |             |
| c.          |                       |          |              |            |             |
| d.          |                       |          |              |            |             |

#### DESTINATIONS IN SPAIN

- ALICANTE
- BARCELONA
- CADIZ
- GRANADA
- MADRID
- MALAGA
- MARBELLA
- SALAMANCA
- SEVILLE
- TENERIFE
- VALENCIA
- OTHER(S)

#### SUMMER CAMPS IN SPAIN

- BARCELONA BEACH
- MADRID
- MALAGA
- MARBELLA ELVIRIA
- MARBELLA CENTRO
- MARBELLA LAS CHAPAS
- SALAMANCA
- VALENCIA

#### DESTINATIONS IN LATIN AMERICA

- ARGENTINA - Buenos Aires
- CHILE - Santiago de Chile
- COLOMBIA - Cartagena de Indias
- COSTA RICA - San Jose
- DOMINICAN REP. - Santo Domingo
- MEXICO - Playa del Carmen
- GUATEMALA - Antigua
- PERU - Cusco
- URUGUAY - Montevideo
- OTHER(S)

#### ONLINE 24/7 - 365

- WORLDWIDE

### ACCOMMODATION If you would like us to arrange your accommodation, please indicate your preferences below:

TYPE OF ACCOMMODATION

- |   |   |   |
|---|---|---|
| <input type="checkbox"/> HOST FAMILY              | <input type="checkbox"/> SINGLE ROOM                | <input type="checkbox"/> NO MEALS                                       |
| <input type="checkbox"/> STUDENT RESIDENCE        | <input type="checkbox"/> DOUBLE ROOM (With whom?)   | <input type="checkbox"/> WITH BREAKFAST                                 |
| <input type="checkbox"/> SHARED STUDENT APARTMENT | <input type="checkbox"/> DOUBLE ROOM FOR SINGLE USE | <input type="checkbox"/> WITH BREAKFAST AND DINNER (HALF BOARD)         |
| <input type="checkbox"/> PRIVATE APARTMENT        | <input type="checkbox"/> TRIPLE ROOM (With whom?)   | <input type="checkbox"/> WITH BREAKFAST, LUNCH, AND DINNER (FULL BOARD) |
| <input type="checkbox"/> OTHER(S)                 | <input type="checkbox"/> SHARED ROOM                |   |

| TYPE OF ACCOMMODATION | DESTINATION | N° WEEKS | ARRIVAL DATE | DEPARTURE DATE |
|-----------------------|-------------|----------|--------------|----------------|
| a.                    |             |          |              |                |
| b.                    |             |          |              |                |
| c.                    |             |          |              |                |
| d.                    |             |          |              |                |

## ACCOMMODATION PREFERENCES

DO YOU WANT A PRIVATE BATHROOM (UPON AVAILABILITY AND AT AN ADDITIONAL COST)?  Yes  No

DO YOU NEED A SPECIAL DIET (AT AN ADDITIONAL COST)?  Yes  No SPECIFY:

OTHER REQUESTS (we will do all we can to comply with your preferences, but we cannot make any guarantees)

DO YOU SMOKE?  Yes  No

DO YOU PREFER A NON-SMOKING FAMILY?  Yes  No

DO YOU PREFER A FAMILY WITHOUT PETS?  Yes  No

IS THERE ANYTHING ELSE WE NEED TO KNOW (MEDICAL PROBLEMS, ALLERGIES, DISLIKE OF PETS) IN ORDER TO HELP US FIND YOU A SUITABLE FAMILY?

Laundry is included in the homestay accommodation in Spain. A deposit is required for accommodation in apartments and residences. Water and electricity are included in the fees. We will also send you instructions on how to reach your accommodation by public transportation along with confirmation of your booking. You should arrange to arrive on Sunday afternoon/evening and leave on Saturday morning. If you arrive earlier or depart after the designated times, there will be charges for extra nights. You should also advise your host family or the school of your estimated time of arrival. Every effort will be made to arrange accommodation as requested. However, this cannot be guaranteed in the case of late bookings.

## TRANSFER SERVICES

If you would like to be met at the airport and transferred to your accommodation, please complete the data below. Please advise Enforex of your arrival details as soon as possible, at least one week before the course begins.

ARRIVAL TRANSFER  Yes, I want an arrival transfer  No, I don't want an arrival transfer

DAY/MONTH/YEAR OF ARRIVAL

ARRIVAL TIME

AIRLINE Flight number

COMING FROM (CITY)

ARRIVAL IN (SPAIN)

ALICANTE  BARCELONA  GRANADA  GERONA  
 GIBRALTAR  JEREZ  MADRID  MALAGA  
 SALAMANCA  SEVILLE  TENERIFE NORTE  TENERIFE SUR  
 REUS  VALENCIA  VALLADOLID  OTHER(S) \_\_\_\_\_

RETURN TRANSFER  Yes, I want a return transfer  No, I don't want a return transfer

DAY/MONTH/YEAR OF DEPARTURE

DEPARTURE TIME

AIRLINE Flight number

DEPARTING FROM (CITY)

ARRIVAL IN (LATIN AMERICA)

ARGENTINA  COSTA RICA  MEXICO  OTHER(S) \_\_\_\_\_  
 CHILE  DOMINICAN REP.  PERU \_\_\_\_\_  
 COLOMBIA  GUATEMALA  URUGUAY \_\_\_\_\_

CAMP BUS SHUTTLE FROM MADRID TO MALAGA, MARBELLA, SALAMANCA OR VALENCIA

YES, I WANT THE CAMP BUS SHUTTLE  One way  Round trip

FROM MADRID TO:  Malaga  Marbella  Salamanca  Valencia

## OTHER SERVICES

TRAVEL HEALTH INSURANCE (see section of the General Conditions)

Cost per week: EUR 35 (programs in Spain; mandatory for Internship programs and students under 18) / USD 40 (programs in Latin America; mandatory for Argentina, Chile, Internship programs, and students under 18)  YES, n° of weeks (= total stay) .....  NO

CANCELLATION GUARANTEE (see section of the General Conditions)

Valid for cancellations before and after arrival. The cost (non-refundable) of this cancellation guarantee is per week EUR 59 (programs in Spain) / EUR 69 (Summer Camps and Junior Programs) / USD 69 (Mexico) and must be selected and paid in full upon enrollment.  YES, n° of weeks (= total stay) .....  NO

INVITATION LETTER (Enforex will send out invitation letters only if the total cost of the program has been paid.)

Do you require it?  YES,  Express courier, extra cost or  Regular post, free /  NO

## AGREEMENT AND PAYMENT

To confirm your enrollment a (non refundable) deposit of EUR 250 (for programs in Spain) or USD 300 (for programs in Latin America) from the total must be paid either to Enforex or to our local representative (students who require a visa may have other/additional conditions. Please refer to the general conditions on the next page). This deposit is not an additional cost. The remaining fees must be paid at least 4 weeks before arrival. In no case whatsoever will a refund be made for the cost of the program or accommodation once the program has started. Cancellation policy is available in our general price list and you can always find the most updated General Conditions online: [www.enforex.com/payment.html](http://www.enforex.com/payment.html)

Yes, I have read and agree with the Enforex Terms and Conditions.

### HOW TO PAY

Please indicate how you would like to pay (Bank or personal checks won't be accepted).

Bank transfers are made payable to IDEAL EDUCATION GROUP, S.L.

All bank charges are paid by the sender.

Bank transfer  Visa or Master Card\*  To our representative

Account name IDEAL EDUCATION GROUP, S.L.  
Bank name SABADELL  
Swift Code and BIC BSABESBBXXX  
Branch Address Enrique Larreta, 12 - 28036 Madrid - SPAIN

(€) EUROS ACCOUNT

IBAN number ES26-0081-0298-4800-0121-4223

(\$) US DOLLARS ACCOUNT

IBAN number ES24-0081-0298-4200-7053-0365

\* Fill this out only if you are paying by VISA or Master Card (Transactions with other credit cards are not accepted)

Visa  Master Card

NAME OF CARD HOLDER

ID/PASSPORT NO. OF CARD HOLDER

CREDIT CARD NO.

EXPIRATION DATE

CARD VERIFICATION NUMBER (ON BACK OF CARD)

TOTAL AMOUNT ENCLOSED OR AUTHORIZED FOR CHARGE  EUR  USD

Authorized signature

Without a handwritten signature, your payment will not be processed.

DATE AND SIGNATURE OF STUDENT/LOCAL REPRESENTATIVE







## GENERAL CONDITIONS

### COVID-19 SAFE SPANISH SCHOOL

All Enforex schools in Spain are Certified as COVID-19 Safe School applying all requirements and recommendations according to the latest regulations. Download our safety guidelines here: [www.enforex.com/brochures/health-and-safety-guidelines-eng.pdf](http://www.enforex.com/brochures/health-and-safety-guidelines-eng.pdf)

Due to COVID Safety protocols, Enforex Camps reserves the right to carry out a COVID rapid test on the students at any time when necessary to ensure the students' and center's safety. In the event that a student's parents refuse their child to undergo the aforementioned test, the student will need to abandon the program immediately with its due cost and no right for refund whatsoever.

### 100% CANCELLATION GUARANTEE AND FLEXIBILITY BOOKINGS

- The payment of 100% of the invoice is mandatory before the arrival of the client.
- However, in the event of a pandemic or covid-19 during the course, we will be flexible with all bookings, changes, extensions or cancellations. You will be offered at any time the following 3 options:
  1. Transfer your booking to an alternative Live Online course. We will move your booking to Online Classes with a live teacher with no administration fees or penalties.
  2. Extend your program and transfer your booking to a later date offering you a credit note valid for a year. Subject to availability we will move your booking to a later date, with no administration fees or penalties.
  3. Request a full refund. We will refund you the full amount you have paid for your booking in case you want to cancel. Two weeks of advance notice is required.

- Enforex is a private company owned by Ideal Education Group (IEG). All Enforex schools are accredited by the Cervantes Institute and other institutions. Head Office is place in Gustavo Fernández Balbuena 11, 28002 Madrid, Spain. Tax Identification Code (CIF) B-79946729. IDEAL EDUCATION GROUP SL, registered in the Mercantile Registry of Madrid Volume 868, book 0, folio 154, section 8, page N°-17,285.
- Enforex guarantees that all descriptions of programs, accommodation, and complementary services in the prices and dates 2022 are updated (any and all special arrangements and/or agreements must be set in writing and signed by Enforex). You can always find the most updated version online at: [www.enforex.com/brochures/prices-2022.pdf](http://www.enforex.com/brochures/prices-2022.pdf)
- The personnel in charge of airport transfer and transportation to accommodation are insured, completely familiar with the area, and know exactly where the students are to be dropped off.
- Enforex is a member of, accredited by or part of the following national and international organizations: eduSpain, NAUSA, Ideal Quality Certificate, AATSP, ALTO, AMACFE, FEDELE, AEAEC, ACTFL and ELITE.
- Enforex guarantees a maximum of 8 students per classroom (12 in workshops, cultural classes and high season). Maximum 15 students in Summer Camps and Junior Programs. Maximum 10 in the Online courses (12 in high season and workshops).
- Enforex's conditions do not apply to partner schools. Each partner school has its own conditions. For more information, please contact our Head Office.
- Enforex reserves the right to use all photos and videos taken during the student's stay. Students should be aware that they may appear in IEG's or partner's promotional material, unless the student expressly states upon arrival or during the photo shooting at the school that he/she does not wish to appear.
- In the case of a serious disciplinary offence or repeated bad behavior, the student will be expelled from the program contracted with Enforex without the right to any refund.
- Published offers or special discounts cannot be combined. All offers are subject to availability. There will be no changes made to bookings that have been received prior to the promotion. All offers and promotions will be applied upon enrollment. Discounts that became available after the first enrollment are not valid.
- The application fee is valid for one year from the first reservation made for all IEG schools in Spain and Latin America. In other words, any courses reserved during a 12-month period can be made using the same application fee.
- In the exceptional case that only 2 students are enrolled in a course in the same level, the school reserves the right to convert the course into a semi-private program which will result in a 50% reduction of class hours and in the exceptional case that only 1 student is enrolled in a course, the school reserves the right to convert the course into a private program which will result in a 70% reduction of class hours.
- If a student cannot attend a private class, they must inform Enforex in writing at least 72 hours ahead of time if they wish to make up the class.
- In cities where programs are also available at other schools with Ideal Education Group, classes can be combined at any time.
- Any comments or complaints must be submitted in writing and within the first 24 hours to [help@enforex.com](mailto:help@enforex.com). This ensures that we can take care of the issue as soon as possible and seek a

quick resolution. Only complaints made during the student's stay have the right to any possible compensation, refund, or changes. Any complaints made after departure will only be accepted as suggestions in order to improve our services.

### COURSE ACCREDITATION

- A personalized Enforex certificate of attendance and completion will be issued for studies in accordance with the guidelines established by the Instituto Cervantes and the current legislation regulating non-accredited education.
  - The certificate will contain the name of the course taken, course level, and number of hours completed. The student of the school in which the classes were given, dates of enrollment, and level achieved will also be included.
  - The certificate of attendance and completion will only be issued to students who attend at least 85% of their classes and is not valid as an official document in accordance with the legislation regulating non-accredited education.
- ### CREDIT NOTES
- Credit issued due to exceptional circumstances is only valid for up to 12 months from the date of issuance. Once the 12-month period ends, the student loses all the right to the credit or refund.
  - Credit is valid only for the geographic region for which it was issued (i.e., credit issued for Spain is not valid for programs in Latin America) and is not transferable to other students.
  - Credit notes cannot be converted into a refund or be used for a partner school.
  - Prices vary from one year to another and will be updated. Please take in mind that this will increase or decrease the issued credit amount when using your credit note.

### ACCOMMODATION

- For registrations received a week or less prior to the beginning of a course, Enforex does not guarantee the type of accommodation desired and requested by the student; priority is given to students who register further in advance.
  - In the event that a student is not satisfied with the assigned accommodation for any justifiable reason, the student may move to another accommodation of the same type (up to 3 changes allowed). Students wishing to change accommodation arrangements must notify the person in charge during their first day of the program.
  - All students must inform Enforex or the host family in advance (7 days of their approximate time of arrival). In the event that one of the previously mentioned parties is not contacted, Enforex will not be held responsible for greeting or picking up the student upon arrival.
  - Enforex does not guarantee accommodation for the family members or friends of enrolled students, as priority regarding available accommodation is given to Enforex students.
  - The student will be charged for property damages caused either intentionally or through negligence.
  - If there is damage and no one is directly responsible, the cost of repairs will be divided among all students in the apartment or residence.
  - At Enforex, respect for others and for the rules is essential for our programs to run smoothly. Students' failure to follow the established rules will be grounds for withholding the accommodation security deposit. Some examples of behaviors that merit forfeit of the accommodation deposit include having guests stay overnight, smoking in the bedrooms, consumption of alcohol, consumption of any narcotic or harmful substance, and any other conduct that Enforex's management considers inappropriate.
  - It is not allowed to making loud noises, having parties, or music in our accommodation at any time.
  - In the case of a serious disciplinary offence, repeated bad behavior, or not following the established rules, the student will be expelled from the accommodation contracted with Enforex without the right to a refund.
  - Apartments and student residences may be substituted by other types of accommodation, at the same price, during the high season in exceptional cases.
  - If you reserve a shared double room (shared with another student) and there is no other student with whom you can share the room, we reserve the right to change your room at any time. If we make an upgrade to a single room during your stay, and we need the accommodation after your arrival, we reserve the right to change your room at any time again to your original reserved and confirmed booking accommodation option.
- ### COURSE CANCELLATIONS AND CHANGES
- All program fees must be paid at least 4 weeks prior to arrival. Otherwise, Enforex reserves the right to cancel the student's booking.
  - The € 250/\$ 300 deposit will not be returned for any cancellations made.
  - For cancellations made less than 4 weeks before the start date, you will be charged the application fee plus the cost of 2 weeks of the program (course and/or accommodation).
  - Participants who cancel their Spanish + Internship, Volunteer program or any other Special program in Spain or Latin America, more than 4 weeks before it is scheduled to begin will be charged a € 500/\$ 600 cancellation fee. If this program is canceled less than 4 weeks before the program start date, the full price of the program will be charged.
  - For cancellations made less than 2 weeks or 'no show' of the student for any reason, you will be charged the cost of 4 weeks for the program (course

and/or accommodation) plus all extras reserved in your confirmed booking, unless you have purchased and paid our Cancellation Guarantee.

- Cancellations made once the invitation letter has been sent to you for a student visa application, have special conditions (see section Visas for Spain).
- For cancellations of a private apartment or hotel reservation, no refund or credit towards the purchase of other products will apply.
- All refunds, under any circumstances, are subject to an administration fee of 9% (or a minimum of € 75/\$ 90), i.e., when a refund is issued, Enforex will retain 9% as well as the € 250/\$ 300 deposit. Refunds for overpayment will be subject to a minimum € 35/\$ 40 administration fee.
- All students who wish to cancel their program (course and/or accommodation) prior to arrival must notify Enforex in writing by email [registration@enforex.com](mailto:registration@enforex.com) or by certified mail to our head office in Madrid.
- Cancellations not received via one of the two aforementioned means will not be accepted.
- In no case whatsoever will a refund be made for the cost of the program or accommodation once the program has started (unless the cancellation guarantee has been purchased).
- For each change before arrival to your confirmed booking (start dates, program, or services) for programs in Spain and Latin America, € 55/\$ 60 will be charged for administrative costs. For changes after arrival of destination, school, accommodation or program € 55/\$ 60 will be charged for courses in Spain and Mexico and subject to availability, paying the price difference if applicable. For all other changes after arrival to your confirmed reservation for programs in Spain and Latin America, € 250/\$ 300 will be charged for administrative costs. All changes are subject to availability.
- Holidays & Course break: 1 free week off for holidays is available for every 4 weeks of study (1-week notice required). Students will be charged for their full stay at our accommodation, including breaks, in order to keep their reservation). In all other cases, taking a break during your course will incur a fee of € 75/\$ 90 and accommodation must be paid in full for the original program length (subject to availability).
- Enforex cannot be held responsible for cancellations due to health, Acts of God, health issues, or personal problems.

### SUMMER RESIDENTIAL PROGRAM CANCELLATIONS

- For the confirmation of reservations made 4 weeks or less before arrival, the total invoice must be paid in full at the time of enrollment.
- A penalty of € 850 will be applied to cancellations made in the last four weeks prior to arrival.
- No refunds will be granted two weeks before or any time after arrival in any case.

### TRAVEL HEALTH INSURANCE

Without insurance, students are not covered for any illness, accident, or loss of property (inside or outside accommodations or classroom) during their stay. Enforex recommends the use of optional insurance, at a cost of € 35/\$ 40 per week.

### CANCELLATION GUARANTEE | RECOMMENDED

- To avoid cancellation expenses in the case of cancellation before and after arrival, Enforex recommends students purchase a Cancellation Guarantee at a (non-refundable) cost of € 59/\$ 69 per week (€ 69 per week for the Summer Camp and Junior Program). To be valid, the total cost of the Cancellation Guarantee must be paid in full upon booking along with the deposit.
- This guarantee is personal and nontransferable and must be purchased, signed and paid in full upon enrollment in order to be valid. You can add extra services but not decrease the coverage.
- When you purchase this guarantee, the time period covered by this guarantee is from the day of enrollment until the finalization of the program with don Quijote. We will refund the full cost not used of your course, accommodation and extras if you cancel anytime.
- Students who purchase the Cancellation Guarantee can cancel all or part of their program for any reason without justification. I.e. homesick, course break, returning back to home country, examination, work, illness including Covid-19 of either the student or an immediate direct family member, pregnancy, being called to court proceedings or as a member of an electoral board, damage to your property requiring your presence, cancellation of the trip by the airline, the obligation of doing military service...
- Student will be refunded 100% of the unused part of the program in case the cancellation is made during your stay.
- Cancellations not communicated before Monday of the previous week will be charged for one week's accommodation and course.
- An administration fee of € 75/\$ 90 and € 35/\$ 40 bank charges will be charged for any and all refunds.
- In order to cancel a language program, the student must give notice via email to [seg@iegroup.com](mailto:seg@iegroup.com). The day after the email is sent will be considered the day the course has been officially canceled. Cancellation is only valid once an email has been received. For this reason, it is important that the student is certain that the email has been received. The money will be returned within 30 days of the official cancellation date.
- Students who require and have obtained their visa through Enforex can purchase the cancellation guarantee, however their cancellation will only be considered once the student provides proof of having left the host country. In these cases, 9% of the amount to be refunded will be charged plus an

administration fee of € 75/\$ 90 and € 35/\$ 40 bank charges will to cover administrative costs.

- Only valid for our Ideal Education Group schools in Spain and Mexico.

### USEFUL INFORMATION

#### VISAS FOR SPAIN

- Citizens of countries belonging to the European Union do not need a visa to enter Spain.
- Students coming from other countries should obtain information regarding the requirements for obtaining a *visado (visa)* at their nearest Spanish Embassy or Consulate. The certificates that accredit and confirm a student's enrollment in a Spanish program at Enforex can only be signed, sealed, and sent by people authorized by Enforex, who will not be responsible for rejected visa applications. These certificates do not hold any official validity; they serve only as confirmation of a course to be taken at one of our schools. Such documents will only be sent to cover the amount of course time initially contracted by the student. Enforex will send out, free of charge and to any student who asks for them, the following documents if and only if the total cost of the program has been paid:
  - Confirmation of the Spanish program chosen by the student.
  - Invoice for the total cost of the program in question (course + accommodation).
- In the event that the student should urgently need the originals of any of these documents, Enforex will send them and charge the cost of express mail to the student.
- If a student visa is rejected, Enforex will refund the cost of the program minus € 350/\$ 400, and any additional basic costs. The student must show Enforex formal proof (original copy) that their visa application has been rejected in order to receive a refund. If this original copy is not received by Enforex, 100% of the cost of the program will be charged.
- Any refund from Enforex if a student visa is rejected will be subject to a 9% charge (a minimum of € 75/\$ 90).
- If the student does not obtain the visa on time for the reserved program and needs to delay or cancel his/her arrival, we will charge 100% of the first 2 weeks plus all described cancellation fees (see section Course Cancellations and Changes).

#### AIRPORT TRANSFER SERVICES

- Flight information (place, date, time, and flight number) must be confirmed in writing at least one week prior to arrival. Otherwise, Enforex will not be held responsible for picking up the student at the airport and there will be no refund.
- If the student cancels the airport shuttle service less than one week prior to arrival, he/she will lose the right to a refund of the cost of that service.
- In the exceptional case that other students who have reserved a private airport transfer service with us and arrive around the same time, our driver reserves the right to combine the transfers.
- In the event of delays or changes in flight information without previous notification, Enforex will not be held responsible for picking up the student at the airport and there will be no refund.

#### HOLIDAYS

- Please check for updated holiday information before planning your trip to Spain or Latin America [www.enforex.com/student-corner/faq/holidays](http://www.enforex.com/student-corner/faq/holidays)
- Classes missed due to national or local holidays will not be made up or refunded. When more than one holiday falls in the same week (Monday - Friday), either one day of the missed classes can be made up or a 20% discount will be applied to the corresponding course week price for a 1 or 2-week program; if students prefer to receive the discount they must notify us at the time of enrollment. One-to-One classes will always be made up.

#### PROTECTION OF PERSONAL DATA

- In compliance with Spanish Law 15/1999, December 13<sup>th</sup>, regarding the protection of personal data, Enforex would like to inform you that your personal details within these general conditions will be stored in a database (that IEG is liable and responsible for) and used solely for the commercial and operative purposes of the company. By accepting these general conditions, you give your consent to the aforementioned treatment of your personal details and their use for the aforementioned purposes. At the same time, you have the right to request that we inform you of your rights to access, correct, and cancel such information within the established terms of the prevailing legislation, by writing to the following address: Enforex, Gustavo Fernández Balbuena 11, 28002 Madrid (Spain).

#### AGREEMENT

Upon signing the registration form or paying the program fees, the student accepts all of the conditions described above. If, under any circumstances, outside of Enforex's control, accommodation prices increase, Enforex will notify the student ahead of said changes. The prices in this document supersede all previously existing prices and are valid from January 1, 2022 to December 31, 2022 for all programs taking place between these two dates. Enforex is not responsible for typographical errors and/or misprints contained in this price list. Printed in September 2021 and subject to change.

“By being the reference for **Spanish culture**, we transform people’s lives.”



## Spanish in the **Spanish** World



### **11** Spanish Language Campuses in Spain

Alicante | Barcelona | Cadiz | Granada | Madrid | Malaga  
Marbella | Salamanca | Seville | Tenerife | Valencia

### **21** Spanish in Latin America

Argentina | Bolivia | Chile | Colombia | Costa Rica | Cuba  
Dominican R. | Ecuador | Guatemala | Mexico | Peru | Uruguay

### **8** International Summer Camps

Barcelona | Madrid | Malaga | Marbella  
Salamanca | Valencia

### **1** Online Campus



# Enforex

#### Head Office

Gustavo Fernández Balbuena 11  
28002 Madrid | Spain  
T. +34 91 594 37 76

[info@enforex.com](mailto:info@enforex.com)